

Datasheet for ABIN1539214  
**anti-GATSL2 antibody (N-Term)**[Go to Product page](#)

## 3 Images

## Overview

|                      |  |
|----------------------|--|
| Quantity:            | 400 µL   |
| Target:              | GATSL2   |
| Binding Specificity: | AA 25-51, N-Term   |
| Reactivity:          | Human  |
| Host:                | Rabbit   |
| Clonality:           | Polyclonal   |
| Conjugate:           | This GATSL2 antibody is un-conjugated  |
| Application:         | Western Blotting (WB), Immunohistochemistry (Paraffin-embedded Sections) (IHC (p)) |

## Product Details

|                       |  |
|-----------------------|--|
| Immunogen:            | This GATSL2 antibody is generated from rabbits immunized with a KLH conjugated synthetic peptide between 25-51 amino acids from the N-terminal region of human GATSL2. |
| Clone:                | RB30525  |
| Isotype:              | IgG  |
| Predicted Reactivity: | B, M, Rat, X   |
| Purification:         | This antibody is purified through a protein A column, followed by peptide affinity purification.   |

## Target Details

|                   |  |
|-------------------|--|
| Target:           | GATSL2                                     |
| Alternative Name: | GATSL2 ( <a href="#">GATSL2 Products</a> ) |

## Target Details

|                   |   |
|-------------------|---|
| Background:       | The function of this protein remains unknown. |
| Molecular Weight: | 36056   |
| Gene ID:          | 389523  |
| UniProt:          | <a href="#">A6NHX0</a>                        |

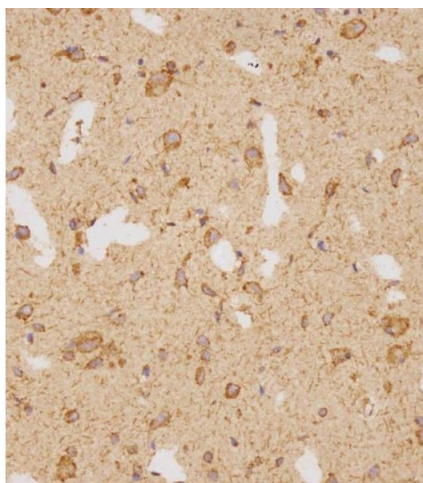
## Application Details

|                    |  |
|--------------------|--|
| Application Notes: | WB: 1:1000. IHC-P-Leica: 1:250. IHC-P-Leica: 1:250 |
| Restrictions:      | For Research Use only                              |

## Handling

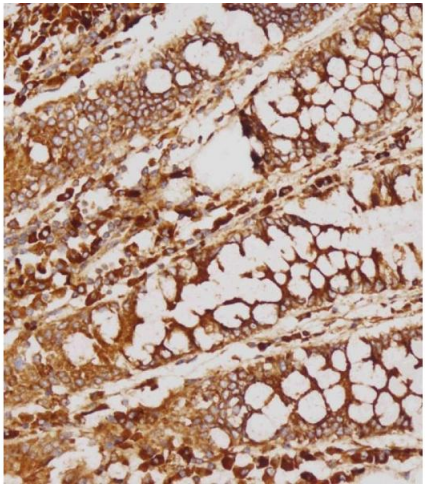
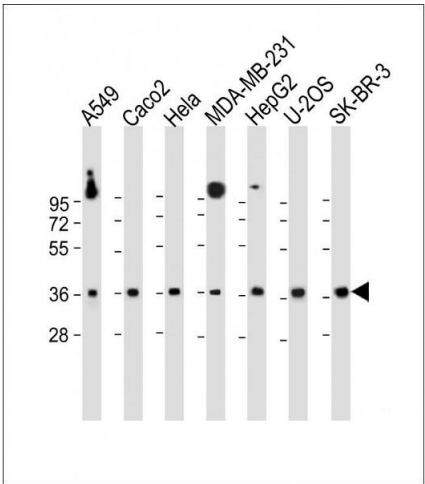
|                    |  |
|--------------------|--|
| Format:            | Liquid   |
| Buffer:            | Purified polyclonal antibody supplied in PBS with 0.09 % (W/V) sodium azide.   |
| Preservative:      | Sodium azide   |
| Precaution of Use: | This product contains Sodium azide: a POISONOUS AND HAZARDOUS SUBSTANCE which should be handled by trained staff only. |
| Storage:           | 4 °C, -20 °C   |
| Storage Comment:   | GATSL1 Antibody (N-term) can be refrigerated at 2-8 °C for up to 6 months. For long term storage, keep at -20 °C.      |
| Expiry Date:       | 6 months   |

## Images



### Immunohistochemistry (Paraffin-embedded Sections)

**Image 1.** Immunohistochemical analysis of (ABIN1539214 and ABIN2838155) on paraffin-embedded human brain tissue was performed on the Leica®BOND RXm. Tissue was fixed with formaldehyde at room temperature. Heat induced epitope retrieval was performed by EDTA buffer (pH 9.0). Samples were incubated with primary Antibody (1:250) for 15 min at room temperature. Leica Bond Polymer Refine Detection was used as the secondary



antibody.

### Western Blotting

**Image 2.** All lanes : Anti-GATSL2 Antibody (N-term) at 1:1000 dilution Lane 1: A549 whole cell lysate Lane 2: Caco2 whole cell lysate Lane 3: HeLa whole cell lysate Lane 4: MDA-MB-231 whole cell lysate Lane 5: HepG2 whole cell lysate Lane 6: U-2OS whole cell lysate Lane 7: SK-BR-3 whole cell lysate Lysates/proteins at 20 µg per lane. Secondary Goat Anti-Rabbit IgG, (H+L), Peroxidase conjugated at 1/10000 dilution. Predicted band size : 36 kDa Blocking/Dilution buffer: 5 % NFDM/TBST.

### Immunohistochemistry (Paraffin-embedded Sections)

**Image 3.** Immunohistochemical analysis of (ABIN1539214 and ABIN2838155) on paraffin-embedded human colon tissue was performed on the Leica®BOND RXm. Tissue was fixed with formaldehyde at room temperature. Heat induced epitope retrieval was performed by EDTA buffer (pH 9.0). Samples were incubated with primary Antibody (1:250) for 15 min at room temperature. Leica Bond Polymer Refine Detection was used as the secondary antibody.