

Datasheet for ABIN1539240  
**anti-ITM2C antibody (N-Term)**[Go to Product page](#)

## 1 Image

## Overview

Quantity:	400 µL
Target:	ITM2C
Binding Specificity:	AA 27-55, N-Term
Reactivity:	Human
Host:	Rabbit
Clonality:	Polyclonal
Conjugate:	This ITM2C antibody is un-conjugated
Application:	Western Blotting (WB)

## Product Details

Immunogen:	This ITM2C antibody is generated from rabbits immunized with a KLH conjugated synthetic peptide between 27-55 amino acids from the N-terminal region of human ITM2C.
Clone:	RB36714
Isotype:	Ig Fraction
Predicted Reactivity:	Pr
Purification:	This antibody is purified through a protein A column, followed by peptide affinity purification.

## Target Details

Target:	ITM2C
Alternative Name:	ITM2C ( <a href="#">ITM2C Products</a> )

## Target Details

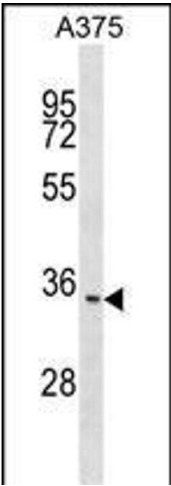
Background:	Negative regulator of beta amyloid peptide production. May inhibit the processing of APP by blocking its access to alpha-and beta-secretase. Binding to the beta-secretase-cleaved APP C-terminal fragment is negligible, suggesting that ITM2C is a poor gamma-secretase cleavage inhibitor. May play a role in TNF-induced cell death and neuronal differentiation (By similarity).
Molecular Weight:	30224
Gene ID:	81618
NCBI Accession:	<a href="#">NP_001012532</a> , <a href="#">NP_001012534</a> , <a href="#">NP_112188</a>
UniProt:	<a href="#">Q9NQX7</a>

## Application Details

Application Notes:	WB: 1:1000
Restrictions:	For Research Use only

## Handling

Format:	Liquid
Buffer:	Purified polyclonal antibody supplied in PBS with 0.09 % (W/V) sodium azide.
Preservative:	Sodium azide
Precaution of Use:	This product contains Sodium azide: a POISONOUS AND HAZARDOUS SUBSTANCE which should be handled by trained staff only.
Storage:	4 °C,-20 °C
Storage Comment:	ITM2C Antibody (N-term) can be refrigerated at 2-8 °C for up to 6 months. For long term storage, keep at -20 °C.
Expiry Date:	6 months



Western Blotting

**Image 1.** ITM2C Antibody (N-term) (ABIN1539240 and ABIN2848831) western blot analysis in cell line lysates (35 µg/lane). This demonstrates the ITM2C antibody detected the ITM2C protein (arrow).