

Datasheet for ABIN1539243
anti-GCSH antibody (N-Term)[Go to Product page](#)

1 Image

Overview

Quantity:	400 µL
Target:	GCSH
Binding Specificity:	AA 27-56, N-Term
Reactivity:	Human
Host:	Rabbit
Clonality:	Polyclonal
Application:	Western Blotting (WB)

Product Details

Immunogen:	This GCSH antibody is generated from rabbits immunized with a KLH conjugated synthetic peptide between 27-56 amino acids from the N-terminal region of human GCSH.
Clone:	RB36545
Isotype:	Ig Fraction
Predicted Reactivity:	B, Rb
Purification:	This antibody is purified through a protein A column, followed by peptide affinity purification.

Target Details

Target:	GCSH
Alternative Name:	GCSH (GCSH Products)
Background:	The glycine cleavage system catalyzes the degradation of glycine. The H protein shuttles the

Target Details

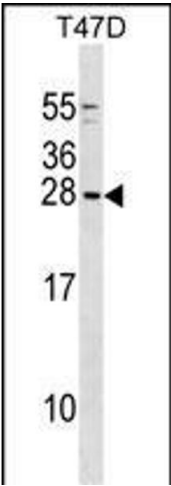
	methylamine group of glycine from the P protein to the T protein.
Molecular Weight:	18885
Gene ID:	2653
NCBI Accession:	NP_004474
UniProt:	P23434

Application Details

Application Notes:	WB: 1:1000
Restrictions:	For Research Use only

Handling

Format:	Liquid
Buffer:	Purified polyclonal antibody supplied in PBS with 0.09 % (W/V) sodium azide.
Preservative:	Sodium azide
Precaution of Use:	This product contains Sodium azide: a POISONOUS AND HAZARDOUS SUBSTANCE which should be handled by trained staff only.
Storage:	4 °C,-20 °C
Storage Comment:	GCSH Antibody (N-term) can be refrigerated at 2-8 °C for up to 6 months. For long term storage, keep at -20 °C.
Expiry Date:	6 months



Western Blotting

Image 1. GCSH Antibody (N-term) (ABIN1539243 and ABIN2848610) western blot analysis in T47D cell line lysates (35 µg/lane). This demonstrates the GCSH antibody detected the GCSH protein (arrow).