



[Go to Product page](#)

Datasheet for ABIN1539249  
**anti-RBM11 antibody (N-Term)**

1 Image

### Overview

Quantity:	400 µL
Target:	RBM11
Binding Specificity:	AA 28-54, N-Term
Reactivity:	Human
Host:	Rabbit
Clonality:	Polyclonal
Application:	Western Blotting (WB)

### Product Details

Immunogen:	This RBM11 antibody is generated from rabbits immunized with a KLH conjugated synthetic peptide between 28-54 amino acids from the N-terminal region of human RBM11.
Clone:	RB37613
Isotype:	Ig Fraction
Purification:	This antibody is purified through a protein A column, followed by peptide affinity purification.

### Target Details

Target:	RBM11
Alternative Name:	RBM11 ( <a href="#">RBM11 Products</a> )
Background:	RBM11, also known as RNA binding motif protein 11, is a human gene. 2 isoforms of the human protein are produced by alternative splicing.

## Target Details

Molecular Weight:	32179
Gene ID:	54033
NCBI Accession:	<a href="#">NP_658983</a>
UniProt:	<a href="#">P57052</a>

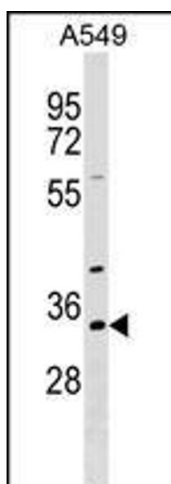
## Application Details

Application Notes:	WB: 1:1000
Restrictions:	For Research Use only

## Handling

Format:	Liquid
Buffer:	Purified polyclonal antibody supplied in PBS with 0.09 % (W/V) sodium azide.
Preservative:	Sodium azide
Precaution of Use:	This product contains Sodium azide: a POISONOUS AND HAZARDOUS SUBSTANCE which should be handled by trained staff only.
Storage:	4 °C, -20 °C
Storage Comment:	RBM11 Antibody (N-term) can be refrigerated at 2-8 °C for up to 6 months. For long term storage, keep at -20 °C.
Expiry Date:	6 months

## Images



### Western Blotting

**Image 1.** RBM11 Antibody (N-term) (ABIN1539249 and ABIN2849185) western blot analysis in A549 cell line lysates (35 µg/lane). This demonstrates the RBM11 antibody detected the RBM11 protein (arrow).