

Datasheet for ABIN1539252

**anti-ESX Homeobox 1 antibody (N-Term)****2** Images[Go to Product page](#)

## Overview

Quantity:	400 µL
Target:	ESX Homeobox 1 (ESX1)
Binding Specificity:	AA 28-55, N-Term
Reactivity:	Human
Host:	Rabbit
Clonality:	Polyclonal
Conjugate:	This ESX Homeobox 1 antibody is un-conjugated
Application:	Western Blotting (WB)

## Product Details

Immunogen:	This ESX1 antibody is generated from rabbits immunized with a KLH conjugated synthetic peptide between 28-55 amino acids from the N-terminal region of human ESX1.
Clone:	RB37249
Isotype:	Ig Fraction
Purification:	This antibody is purified through a protein A column, followed by peptide affinity purification.

## Target Details

Target:	ESX Homeobox 1 (ESX1)
Alternative Name:	ESX1 ( <a href="#">ESX1 Products</a> )
Background:	This gene encodes a dual-function 65 kDa protein that undergoes proteolytic cleavage to

## Target Details

produce a 45 kDa N-terminal fragment with a paired-like homeodomain and a 20 kDa C-terminal fragment with a proline-rich domain. The C-terminal fragment localizes to the cytoplasm while the N-terminal fragment localizes exclusively to the nucleus. In contrast to human, the mouse homolog has a novel PN/PF motif in the C-terminus and is paternally imprinted in placental tissue. This gene likely plays a role in placental development and spermatogenesis.

Molecular Weight: 44297

Gene ID: 80712

NCBI Accession: [NP\\_703149](#)

UniProt: [Q8N693](#)

## Application Details

Application Notes: WB: 1:1000-1:2000. WB: 1:1000

Restrictions: For Research Use only

## Handling

Format: Liquid

Buffer: Purified polyclonal antibody supplied in PBS with 0.09 % (W/V) sodium azide.

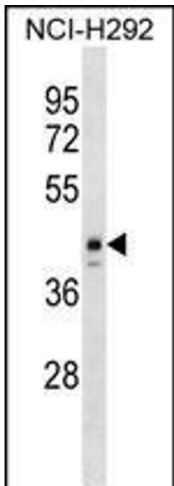
Preservative: Sodium azide

Precaution of Use: This product contains Sodium azide: a POISONOUS AND HAZARDOUS SUBSTANCE which should be handled by trained staff only.

Storage: 4 °C, -20 °C

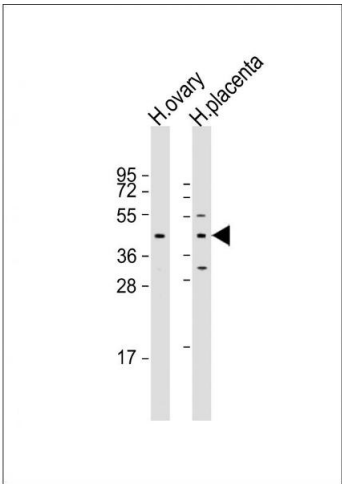
Storage Comment: ESX1 Antibody (N-term) can be refrigerated at 2-8 °C for up to 6 months. For long term storage, keep at -20 °C.

Expiry Date: 6 months



#### Western Blotting

**Image 1.** ESX1 Antibody (N-term) (ABIN1539252 and ABIN2848899) western blot analysis in NCI- cell line lysates (35 µg/lane). This demonstrates the ESX1 antibody detected the ESX1 protein (arrow).



#### Western Blotting

**Image 2.** All lanes : Anti-ESX1 Antibody (N-term) at 1:1000-1:2000 dilution Lane 1: human ovary lysate Lane 2: human placenta lysate Lysates/proteins at 20 µg per lane. Secondary Goat Anti-Rabbit IgG, (H+L), Peroxidase conjugated at 1/10000 dilution. Predicted band size : 44 kDa Blocking/Dilution buffer: 5 % NFDM/TBST.