

Datasheet for ABIN1539253
anti-MSL3 antibody (N-Term)[Go to Product page](#)

1 Image

Overview

Quantity:	400 µL
Target:	MSL3
Binding Specificity:	AA 28-55, N-Term
Reactivity:	Human
Host:	Rabbit
Clonality:	Polyclonal
Application:	Western Blotting (WB)

Product Details

Immunogen:	This MSL3 antibody is generated from rabbits immunized with a KLH conjugated synthetic peptide between 28-55 amino acids from the N-terminal region of human MSL3.
Clone:	RB37942
Isotype:	Ig Fraction
Predicted Reactivity:	M
Purification:	This antibody is purified through a protein A column, followed by peptide affinity purification.

Target Details

Target:	MSL3
Alternative Name:	MSL3 (MSL3 Products)
Background:	This gene encodes a nuclear protein that is similar to the product of the Drosophila male-

Target Details

specific lethal-3 gene. The Drosophila protein plays a critical role in a dosage-compensation pathway, which equalizes X-linked gene expression in males and females. Thus, the human protein is thought to play a similar function in chromatin remodeling and transcriptional regulation, and it has been found as part of a complex that is responsible for histone H4 lysine-16 acetylation. This gene can undergo X inactivation. Alternative splicing results in multiple transcript variants. Related pseudogenes have been identified on chromosomes 2, 7 and 8.

Molecular Weight: 59824

Gene ID: 10943

NCBI Accession: [NP_001180199](#), [NP_001269103](#), [NP_006791](#), [NP_523352](#), [NP_523353](#)

UniProt: [Q8N5Y2](#)

Application Details

Application Notes: WB: 1:1000

Restrictions: For Research Use only

Handling

Format: Liquid

Buffer: Purified polyclonal antibody supplied in PBS with 0.09 % (W/V) sodium azide.

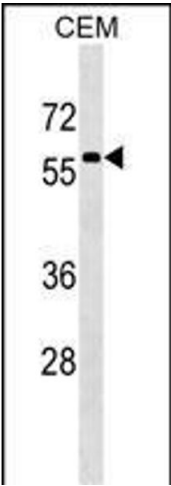
Preservative: Sodium azide

Precaution of Use: This product contains Sodium azide: a POISONOUS AND HAZARDOUS SUBSTANCE which should be handled by trained staff only.

Storage: 4 °C, -20 °C

Storage Comment: MSL3 Antibody (N-term) can be refrigerated at 2-8 °C for up to 6 months. For long term storage, keep at -20 °C.

Expiry Date: 6 months



Western Blotting

Image 1. MSL3 Antibody (N-term) (ABIN1539253 and ABIN2849308) western blot analysis in CEM cell line lysates (35 µg/lane). This demonstrates the MSL3 antibody detected the MSL3 protein (arrow).