



Datasheet for ABIN1539254
anti-MRPL28 antibody (N-Term)



[Go to Product page](#)

2 Images

Overview

Quantity:	400 µL
Target:	MRPL28
Binding Specificity:	AA 28-55, N-Term
Reactivity:	Human
Host:	Rabbit
Clonality:	Polyclonal
Conjugate:	This MRPL28 antibody is un-conjugated
Application:	Western Blotting (WB), Immunofluorescence (IF)

Product Details

Immunogen:	This MRPL28 antibody is generated from rabbits immunized with a KLH conjugated synthetic peptide between 28-55 amino acids from the N-terminal region of human MRPL28.
Clone:	RB38900
Isotype:	Ig Fraction
Purification:	This antibody is purified through a protein A column, followed by peptide affinity purification.

Target Details

Target:	MRPL28
Alternative Name:	MRPL28 (MRPL28 Products)
Background:	Mammalian mitochondrial ribosomal proteins are encoded by nuclear genes and help in protein

Target Details

synthesis within the mitochondrion. Mitochondrial ribosomes (mitoribosomes) consist of a small 28S subunit and a large 39S subunit. They have an estimated 75 % protein to rRNA composition compared to prokaryotic ribosomes, where this ratio is reversed. Another difference between mammalian mitoribosomes and prokaryotic ribosomes is that the latter contain a 5S rRNA. Among different species, the proteins comprising the mitoribosome differ greatly in sequence, and sometimes in biochemical properties, which prevents easy recognition by sequence homology. This gene encodes a 39S subunit protein, a part of which was originally isolated by its ability to recognize tyrosinase in an HLA-A24-restricted fashion.

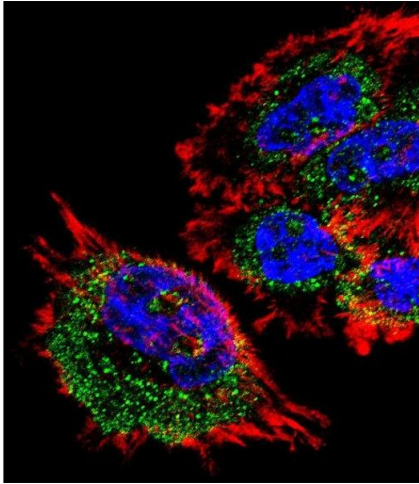
Molecular Weight:	30157
Gene ID:	10573
NCBI Accession:	NP_006419
UniProt:	Q13084
Pathways:	Mitotic G1-G1/S Phases

Application Details

Application Notes:	IF: 1:10~50. WB: 1:1000
Restrictions:	For Research Use only

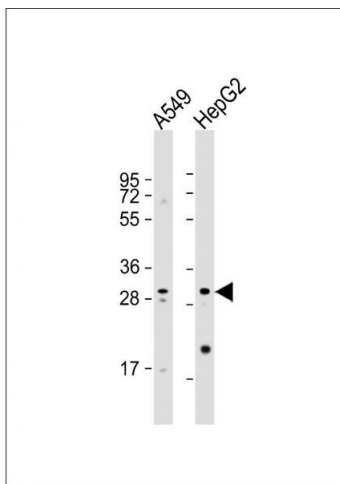
Handling

Format:	Liquid
Buffer:	Purified polyclonal antibody supplied in PBS with 0.09 % (W/V) sodium azide.
Preservative:	Sodium azide
Precaution of Use:	This product contains Sodium azide: a POISONOUS AND HAZARDOUS SUBSTANCE which should be handled by trained staff only.
Storage:	4 °C, -20 °C
Storage Comment:	MRPL28 Antibody (N-term) can be refrigerated at 2-8 °C for up to 6 months. For long term storage, keep at -20 °C.
Expiry Date:	6 months



Immunofluorescence

Image 1. Fluorescent confocal image of A431 cell stained with MRPL28 Antibody (N-term) (ABIN1539254 and ABIN2838173). A431 cells were fixed with 4 % PFA (20 min), permeabilized with Triton X-100 (0.1 %, 10 min), then incubated with MRPL28 primary antibody (1:25, 1 h at 37 °C). For secondary antibody, Alexa Fluor® 488 conjugated donkey anti-rabbit antibody (green) was used (1:400, 50 min at 37 °C). Cytoplasmic actin was counterstained with Alexa Fluor® 555 (red) conjugated Phalloidin (7 units/mL, 1 h at 37 °C). Nuclei were counterstained with DAPI (blue) (10 µg/mL, 10 min). MRPL28 immunoreactivity is localized to Mitochondria significantly.



Western Blotting

Image 2. All lanes : Anti-MRPL28 Antibody (N-term) at 1:1000 dilution Lane 1: A549 whole cell lysate Lane 2: HepG2 whole cell lysate Lysates/proteins at 20 µg per lane. Secondary Goat Anti-Rabbit IgG, (H+L), Peroxidase conjugated at 1/10000 dilution. Predicted band size : 30 kDa Blocking/Dilution buffer: 5 % NFDN/TBST.