



[Go to Product page](#)

Datasheet for ABIN1539257

anti-ZFYVE27 antibody (N-Term)

1 Image

Overview

Quantity:	400 µL
Target:	ZFYVE27
Binding Specificity:	AA 28-56, N-Term
Reactivity:	Human
Host:	Rabbit
Clonality:	Polyclonal
Application:	Western Blotting (WB)

Product Details

Immunogen:	This ZFYVE27 antibody is generated from rabbits immunized with a KLH conjugated synthetic peptide between 28-56 amino acids from the N-terminal region of human ZFYVE27.
Clone:	RB37290
Isotype:	Ig Fraction
Predicted Reactivity:	M, Rat
Purification:	This antibody is purified through a protein A column, followed by peptide affinity purification.

Target Details

Target:	ZFYVE27
Alternative Name:	ZFYVE27 (ZFYVE27 Products)
Background:	This gene encodes a protein with several transmembrane domains, a Rab11-binding domain

Target Details

and a lipid-binding FYVE finger domain. The encoded protein appears to promote neurite formation. A mutation in this gene has been reported to be associated with hereditary spastic paraplegia, however the pathogenicity of the mutation, which may simply represent a polymorphism, is unclear.

Molecular Weight: 45843

Gene ID: 118813

NCBI Accession: [NP_001002261](#), [NP_001002262](#), [NP_001167590](#), [NP_001167591](#), [NP_001167592](#),
[NP_001167593](#), [NP_653189](#)

UniProt: [Q5T4F4](#)

Pathways: [Neurotrophin Signaling Pathway](#)

Application Details

Application Notes: WB: 1:1000

Restrictions: For Research Use only

Handling

Format: Liquid

Buffer: Purified polyclonal antibody supplied in PBS with 0.09 % (W/V) sodium azide.

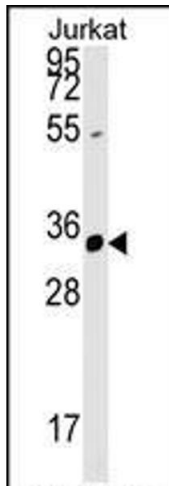
Preservative: Sodium azide

Precaution of Use: This product contains Sodium azide: a POISONOUS AND HAZARDOUS SUBSTANCE which should be handled by trained staff only.

Storage: 4 °C, -20 °C

Storage Comment: ZFYVE27 Antibody (N-term) can be refrigerated at 2-8 °C for up to 6 months. For long term storage, keep at -20 °C.

Expiry Date: 6 months



Western Blotting

Image 1. ZFYVE27 Antibody (N-term) (ABIN1539257 and ABIN2848777) western blot analysis in Jurkat cell line lysates (35 µg/lane). This demonstrates the ZFYVE27 antibody detected the ZFYVE27 protein (arrow).