

Datasheet for ABIN1539263  
**anti-RPL13A antibody (N-Term)**[Go to Product page](#)

## 1 Image

## Overview

Quantity:	400 µL
Target:	RPL13A
Binding Specificity:	AA 28-54, N-Term
Reactivity:	Mouse
Host:	Rabbit
Clonality:	Polyclonal
Conjugate:	This RPL13A antibody is un-conjugated
Application:	Western Blotting (WB)

## Product Details

Immunogen:	This Mouse Rpl13a antibody is generated from rabbits immunized with a KLH conjugated synthetic peptide between 28-54 amino acids from the N-terminal region of mouse Rpl13a.
Clone:	RB40184
Isotype:	Ig Fraction
Predicted Reactivity:	B, H, Pr, Pig, Rat
Purification:	This antibody is purified through a protein A column, followed by peptide affinity purification.

## Target Details

Target:	RPL13A
Alternative Name:	Rpl13a ( <a href="#">RPL13A Products</a> )

## Target Details

**Background:** Ribosomes, the organelles that catalyze protein synthesis, consist of a small 40S subunit and a large 60S subunit. Together these subunits are composed of 4 RNA species and approximately 80 structurally distinct proteins. This gene encodes a ribosomal protein that is a component of the 60S subunit. The protein belongs to the L13P family of ribosomal proteins. It is located in the cytoplasm. Transcript variants utilizing alternative polyA signals have been observed. This gene is co-transcribed with the small nucleolar RNA genes U32, U33, U34, and U35, which are located in its second, fourth, fifth, and sixth introns, respectively. As is typical for genes encoding ribosomal proteins, there are multiple processed pseudogenes of this gene dispersed through the genome.

**Molecular Weight:** 23464

**Gene ID:** 22121

**NCBI Accession:** [NP\\_033464](#)

**UniProt:** [P19253](#)

## Application Details

**Application Notes:** WB: 1:1000

**Restrictions:** For Research Use only

## Handling

**Format:** Liquid

**Buffer:** Purified polyclonal antibody supplied in PBS with 0.09 % (W/V) sodium azide.

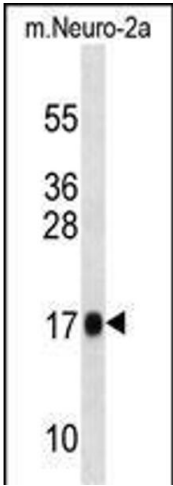
**Preservative:** Sodium azide

**Precaution of Use:** This product contains Sodium azide: a POISONOUS AND HAZARDOUS SUBSTANCE which should be handled by trained staff only.

**Storage:** 4 °C, -20 °C

**Storage Comment:** Mouse Rpl13a Antibody (N-term) can be refrigerated at 2-8 °C for up to 6 months. For long term storage, keep at -20 °C.

**Expiry Date:** 6 months



Western Blotting

**Image 1.** Mouse Rpl13a Antibody (N-term) (ABIN1539263 and ABIN2838309) western blot analysis in mouse Neuro-2a cell line lysates (35 µg/lane). This demonstrates the Rpl13a antibody detected the Rpl13a protein (arrow).