

Datasheet for ABIN1539271  
**anti-GTF2I antibody (N-Term)**

## 2 Images

[Go to Product page](#)

## Overview

Quantity:	400 µL
Target:	GTF2I
Binding Specificity:	AA 281-310, N-Term
Reactivity:	Human
Host:	Rabbit
Clonality:	Polyclonal
Application:	Western Blotting (WB), Immunofluorescence (IF)

## Product Details

Immunogen:	This GTF2I antibody is generated from rabbits immunized with a KLH conjugated synthetic peptide between 281-310 amino acids from the N-terminal region of human GTF2I.
Clone:	RB20972
Isotype:	Ig Fraction
Predicted Reactivity:	M, Rat
Purification:	This antibody is purified through a protein A column, followed by peptide affinity purification.

## Target Details

Target:	GTF2I
Alternative Name:	GTF2I ( <a href="#">GTF2I Products</a> )
Background:	This gene encodes a multifunctional phosphoprotein with roles in transcription and signal

## Target Details

transduction. It is deleted in Williams-Beuren syndrome, a multisystem developmental disorder caused by the deletion of contiguous genes at chromosome 7q11.23. Alternative splicing results in multiple transcript variants. Related pseudogenes have been identified on chromosomes 7, 13 and 21.

Molecular Weight: 112416

Gene ID: 2969

NCBI Accession: [NP\\_001157108](#), [NP\\_001267729](#), [NP\\_001509](#), [NP\\_127492](#), [NP\\_127493](#), [NP\\_127494](#)

UniProt: [P78347](#)

## Application Details

Application Notes: IF: 1:10~50. WB: 1:1000

Restrictions: For Research Use only

## Handling

Format: Liquid

Buffer: Purified polyclonal antibody supplied in PBS with 0.09 % (W/V) sodium azide.

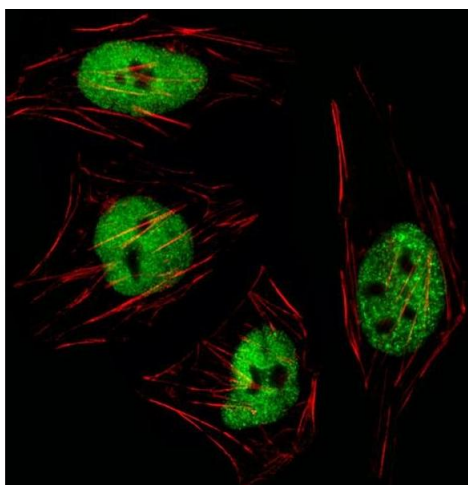
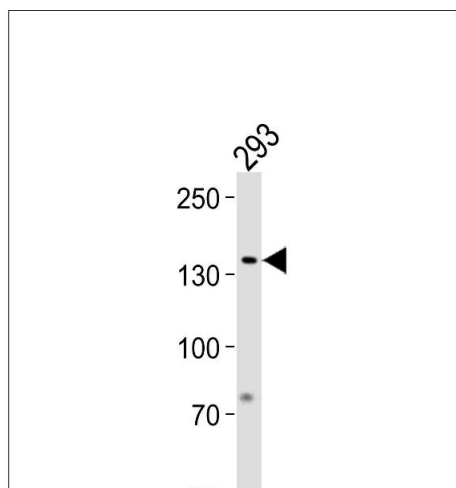
Preservative: Sodium azide

Precaution of Use: This product contains Sodium azide: a POISONOUS AND HAZARDOUS SUBSTANCE which should be handled by trained staff only.

Storage: 4 °C, -20 °C

Storage Comment: GTF2I Antibody (N-term) can be refrigerated at 2-8 °C for up to 6 months. For long term storage, keep at -20 °C.

Expiry Date: 6 months



### Western Blotting

**Image 1.** GTF2I Antibody (N-term) (ABIN1539271 and ABIN2849619) western blot analysis in 293 cell line lysates (35 µg/lane). This demonstrates the GTF2I antibody detected the GTF2I protein (arrow).

### Immunofluorescence

**Image 2.** Fluorescent image of HeLa cell stained with GTF2I Antibody (N-term) (ABIN1539271 and ABIN2849619)/SA111012BI. HeLa cells were fixed with 4 % PFA (20 min), permeabilized with Triton X-100 (0.1 %, 10 min), then incubated with GTF2I primary antibody (1:25, 1 h at 37 °C). For secondary antibody, Alexa Fluor® 488 conjugated donkey anti-rabbit antibody (green) was used (1:400, 50 min at 37 °C). Cytoplasmic actin was counterstained with Alexa Fluor® 555 (red) conjugated Phalloidin (7 units/mL, 1 h at 37 °C). GTF2I immunoreactivity is localized to Nucleus significantly.