



[Go to Product page](#)

Datasheet for ABIN1539275  
**anti-NKX2-8 antibody (N-Term)**

1 Image

Overview

Quantity:	400 µL
Target:	NKX2-8
Binding Specificity:	AA 30-56, N-Term
Reactivity:	Human
Host:	Rabbit
Clonality:	Polyclonal
Application:	Western Blotting (WB)

Product Details

Immunogen:	This NKX2-8 antibody is generated from rabbits immunized with a KLH conjugated synthetic peptide between 30-56 amino acids from the N-terminal region of human NKX2-8.
Clone:	RB37728
Isotype:	Ig Fraction
Purification:	This antibody is purified through a protein A column, followed by peptide affinity purification.

Target Details

Target:	NKX2-8
Alternative Name:	NKX2-8 ( <a href="#">NKX2-8 Products</a> )
Background:	The function of this protein remains unknown.
Molecular Weight:	25866

## Target Details

Gene ID: 26257

NCBI Accession: [NP\\_055175](#)

UniProt: [O15522](#)

## Application Details

Application Notes: WB: 1:1000

Restrictions: For Research Use only

## Handling

Format: Liquid

Buffer: Purified polyclonal antibody supplied in PBS with 0.09 % (W/V) sodium azide.

Preservative: Sodium azide

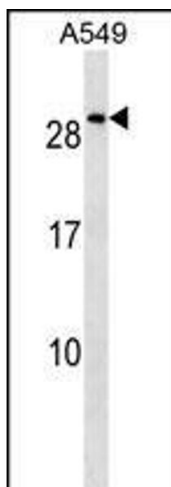
Precaution of Use: This product contains Sodium azide: a POISONOUS AND HAZARDOUS SUBSTANCE which should be handled by trained staff only.

Storage: 4 °C, -20 °C

Storage Comment: NKX2-8 Antibody (N-term) can be refrigerated at 2-8 °C for up to 6 months. For long term storage, keep at -20 °C.

Expiry Date: 6 months

## Images



### Western Blotting

**Image 1.** NKX2-8 Antibody (N-term) (ABIN1539275 and ABIN2849562) western blot analysis in A549 cell line lysates (35 µg/lane). This demonstrates the NKX2-8 antibody detected the NKX2-8 protein (arrow).