



[Go to Product page](#)

Datasheet for ABIN1539279
anti-PPIL6 antibody (N-Term)

1 Image

Overview

Quantity:	400 µL
Target:	PPIL6
Binding Specificity:	AA 30-58, N-Term
Reactivity:	Human
Host:	Rabbit
Clonality:	Polyclonal
Application:	Western Blotting (WB)

Product Details

Immunogen:	This PPIL6 antibody is generated from rabbits immunized with a KLH conjugated synthetic peptide between 30-58 amino acids from the N-terminal region of human PPIL6.
Clone:	RB37966
Isotype:	Ig Fraction
Purification:	This antibody is purified through a protein A column, followed by peptide affinity purification.

Target Details

Target:	PPIL6
Alternative Name:	PPIL6 (PPIL6 Products)
Background:	PPiases accelerate the folding of proteins. It catalyzes the cis-trans isomerization of proline imidic peptide bonds in oligopeptides.

Target Details

Molecular Weight:	35228
Gene ID:	285755
NCBI Accession:	NP_001104768 , NP_775943
UniProt:	Q8IXY8

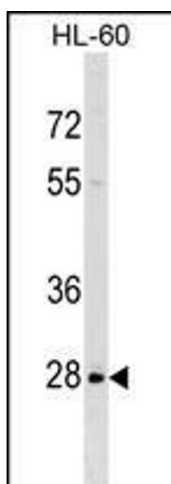
Application Details

Application Notes:	WB: 1:1000
Restrictions:	For Research Use only

Handling

Format:	Liquid
Buffer:	Purified polyclonal antibody supplied in PBS with 0.09 % (W/V) sodium azide.
Preservative:	Sodium azide
Precaution of Use:	This product contains Sodium azide: a POISONOUS AND HAZARDOUS SUBSTANCE which should be handled by trained staff only.
Storage:	4 °C, -20 °C
Storage Comment:	PPIL6 Antibody (N-term) can be refrigerated at 2-8 °C for up to 6 months. For long term storage, keep at -20 °C.
Expiry Date:	6 months

Images



Western Blotting

Image 1. IL6 Antibody (N-term) (ABIN1539279 and ABIN2849314) western blot analysis in HL-60 cell line lysates (35 µg/lane). This demonstrates the IL6 antibody detected the IL6 protein (arrow).