

Datasheet for ABIN1539280
anti-RAB4B antibody (N-Term)[Go to Product page](#)

1 Image

Overview

Quantity:	400 µL
Target:	RAB4B
Binding Specificity:	AA 29-58, N-Term
Reactivity:	Human
Host:	Rabbit
Clonality:	Polyclonal
Application:	Western Blotting (WB)

Product Details

Immunogen:	This RAB4B antibody is generated from rabbits immunized with a KLH conjugated synthetic peptide between 29-58 amino acids from the N-terminal region of human RAB4B.
Clone:	RB39221
Isotype:	Ig Fraction
Predicted Reactivity:	Zf, M, Rat
Purification:	This antibody is purified through a protein A column, followed by peptide affinity purification.

Target Details

Target:	RAB4B
Alternative Name:	RAB4B (RAB4B Products)
Background:	RAB proteins, such as RAB4B, are members of the RAS superfamily of small GTPases that are

Target Details

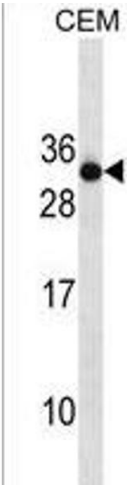
	involved in vesicular trafficking (He et al., 2002 [PubMed 12450215]).
Molecular Weight:	23587
Gene ID:	53916
NCBI Accession:	NP_057238
UniProt:	P61018

Application Details

Application Notes:	WB: 1:1000
Restrictions:	For Research Use only

Handling

Format:	Liquid
Buffer:	Purified polyclonal antibody supplied in PBS with 0.09 % (W/V) sodium azide.
Preservative:	Sodium azide
Precaution of Use:	This product contains Sodium azide: a POISONOUS AND HAZARDOUS SUBSTANCE which should be handled by trained staff only.
Storage:	4 °C,-20 °C
Storage Comment:	RAB4B Antibody (N-term) can be refrigerated at 2-8 °C for up to 6 months. For long term storage, keep at -20 °C.
Expiry Date:	6 months



Western Blotting

Image 1. RAB4B Antibody (N-term) (ABIN1539280 and ABIN2850372) western blot analysis in CEM cell line lysates (35 µg/lane). This demonstrates the RAB4B antibody detected the RAB4B protein (arrow).