



[Go to Product page](#)

Datasheet for ABIN1539281
anti-LZTFL1 antibody (N-Term)

1 Image

Overview

Quantity:	400 µL
Target:	LZTFL1
Binding Specificity:	AA 4-30, N-Term
Reactivity:	Human
Host:	Rabbit
Clonality:	Polyclonal
Application:	Western Blotting (WB)

Product Details

Immunogen:	This LZTFL1 antibody is generated from rabbits immunized with a KLH conjugated synthetic peptide between 4-30 amino acids from the N-terminal region of human LZTFL1.
Clone:	RB38294
Isotype:	Ig Fraction
Predicted Reactivity:	B, Pr, M, Rat
Purification:	This antibody is purified through a protein A column, followed by peptide affinity purification.

Target Details

Target:	LZTFL1
Alternative Name:	LZTFL1 (LZTFL1 Products)
Background:	LZTFL1 (Leucine zipper transcription factor-like 1) contains a leucine zipper pattern and coiled-

Target Details

coil domains.

Molecular Weight: 34592

Gene ID: 54585

NCBI Accession: [NP_065080](#)

UniProt: [Q9NQ48](#)

Application Details

Application Notes: WB: 1:1000

Restrictions: For Research Use only

Handling

Format: Liquid

Buffer: Purified polyclonal antibody supplied in PBS with 0.09 % (W/V) sodium azide.

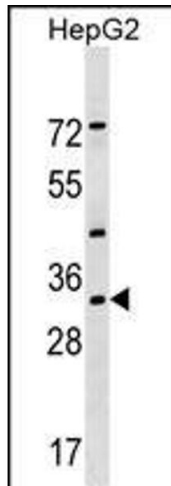
Preservative: Sodium azide

Precaution of Use: This product contains Sodium azide: a POISONOUS AND HAZARDOUS SUBSTANCE which should be handled by trained staff only.

Storage: 4 °C, -20 °C

Storage Comment: LZTFL1 Antibody (N-term) can be refrigerated at 2-8 °C for up to 6 months. For long term storage, keep at -20 °C.

Expiry Date: 6 months



Western Blotting

Image 1. LZTFL1 Antibody (N-term) (ABIN1539281 and ABIN2849593) western blot analysis in HepG2 cell line lysates (35 µg/lane). This demonstrates the LZTFL1 antibody detected the LZTFL1 protein (arrow).