

Datasheet for ABIN1539289
anti-CRTAP antibody (N-Term)[Go to Product page](#)

1 Image

Overview

Quantity:	400 µL
Target:	CRTAP
Binding Specificity:	AA 31-59, N-Term
Reactivity:	Human
Host:	Rabbit
Clonality:	Polyclonal
Application:	Western Blotting (WB)

Product Details

Immunogen:	This CRTAP antibody is generated from rabbits immunized with a KLH conjugated synthetic peptide between 31-59 amino acids from the N-terminal region of human CRTAP.
Clone:	RB36912
Isotype:	Ig Fraction
Purification:	This antibody is purified through a protein A column, followed by peptide affinity purification.

Target Details

Target:	CRTAP
Alternative Name:	CRTAP (CRTAP Products)
Background:	The protein encoded by this gene is similar to the chicken and mouse CRTAP genes. The encoded protein is a scaffolding protein that may influence the activity of at least one member of the cytohesin/ARNO family in response to specific cellular stimuli. Defects in this gene are

Target Details

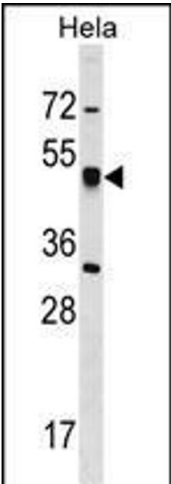
	associated with osteogenesis imperfecta, a connective tissue disorder characterized by bone fragility and low bone mass.
Molecular Weight:	46562
Gene ID:	10491
NCBI Accession:	NP_006362
UniProt:	O75718

Application Details

Application Notes:	WB: 1:1000
Restrictions:	For Research Use only

Handling

Format:	Liquid
Buffer:	Purified polyclonal antibody supplied in PBS with 0.09 % (W/V) sodium azide.
Preservative:	Sodium azide
Precaution of Use:	This product contains Sodium azide: a POISONOUS AND HAZARDOUS SUBSTANCE which should be handled by trained staff only.
Storage:	4 °C,-20 °C
Storage Comment:	CRTAP Antibody (N-term) can be refrigerated at 2-8 °C for up to 6 months. For long term storage, keep at -20 °C.
Expiry Date:	6 months



Western Blotting

Image 1. CRT Antibody (N-term) 17060a western blot analysis in HeLa cell line lysates (35 µg/lane). This demonstrates the CRT antibody detected the CRT protein (arrow).