



[Go to Product page](#)

Datasheet for ABIN1539293
anti-TMOD2 antibody (N-Term)

1 Image

Overview

Quantity:	400 µL
Target:	TMOD2
Binding Specificity:	AA 32-58, N-Term
Reactivity:	Human, Mouse
Host:	Rabbit
Clonality:	Polyclonal
Application:	Western Blotting (WB)

Product Details

Immunogen:	This TMOD2 antibody is generated from rabbits immunized with a KLH conjugated synthetic peptide between 32-58 amino acids from the N-terminal region of human TMOD2.
Clone:	RB38529
Isotype:	Ig Fraction
Predicted Reactivity:	Rat
Purification:	This antibody is purified through a protein A column, followed by peptide affinity purification.

Target Details

Target:	TMOD2
Alternative Name:	TMOD2 (TMOD2 Products)
Background:	This gene encodes a neuronal-specific member of the tropomodulin family of actin-regulatory

Target Details

proteins. The encoded protein caps the pointed end of actin filaments preventing both elongation and depolymerization. The capping activity of this protein is dependent on its association with tropomyosin. Alternatively spliced transcript variants encoding different isoforms have been described.

Molecular Weight: 39595

Gene ID: 29767

NCBI Accession: [NP_001136357, NP_055363](#)

UniProt: [Q9NZR1](#)

Pathways: [Regulation of G-Protein Coupled Receptor Protein Signaling](#)

Application Details

Application Notes: WB: 1:1000

Restrictions: For Research Use only

Handling

Format: Liquid

Buffer: Purified polyclonal antibody supplied in PBS with 0.09 % (W/V) sodium azide.

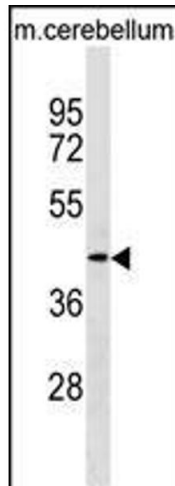
Preservative: Sodium azide

Precaution of Use: This product contains Sodium azide: a POISONOUS AND HAZARDOUS SUBSTANCE which should be handled by trained staff only.

Storage: 4 °C,-20 °C

Storage Comment: TMOD2 Antibody (N-term) can be refrigerated at 2-8 °C for up to 6 months. For long term storage, keep at -20 °C.

Expiry Date: 6 months



Western Blotting

Image 1. TMOD2 Antibody (N-term) (ABIN1539293 and ABIN2849906) western blot analysis in mouse cerebellum tissue lysates (35 µg/lane). This demonstrates the TMOD2 Antibody detected the TMOD2 protein (arrow).