

Datasheet for ABIN1539296  
**anti-LRRC29 antibody (N-Term)**[Go to Product page](#)

## 1 Image

## Overview

Quantity:	400 µL
Target:	LRRC29
Binding Specificity:	AA 32-60, N-Term
Reactivity:	Human
Host:	Rabbit
Clonality:	Polyclonal
Application:	Western Blotting (WB)

## Product Details

Immunogen:	This LRRC29 antibody is generated from rabbits immunized with a KLH conjugated synthetic peptide between 32-60 amino acids from the N-terminal region of human LRRC29.
Clone:	RB37934
Isotype:	Ig Fraction
Purification:	This antibody is purified through a protein A column, followed by peptide affinity purification.

## Target Details

Target:	LRRC29
Alternative Name:	LRRC29 ( <a href="#">LRRC29 Products</a> )
Background:	This gene encodes a member of the F-box protein family which is characterized by an approximately 40 amino acid motif, the F-box. The F-box proteins constitute one of the four subunits of ubiquitin protein ligase complex called SCFs (SKP1-cullin-F-box), which function in

## Target Details

phosphorylation-dependent ubiquitination. The F-box proteins are divided into 3 classes: Fbws containing WD-40 domains, Fbls containing leucine-rich repeats, and Fbxs containing either different protein-protein interaction modules or no recognizable motifs. The protein encoded by this gene belongs to the Fbls class and, in addition to an F-box, contains 9 tandem leucine-rich repeats. Two transcript variants encoding the same protein have been found for this gene. Other variants may occur, but their full-length natures have not been characterized.

Molecular Weight: 23797

Gene ID: 26231

NCBI Accession: [NP\\_001004055](#), [NP\\_036295](#)

UniProt: [Q8WV35](#)

## Application Details

Application Notes: WB: 1:1000

Restrictions: For Research Use only

## Handling

Format: Liquid

Buffer: Purified polyclonal antibody supplied in PBS with 0.09 % (W/V) sodium azide.

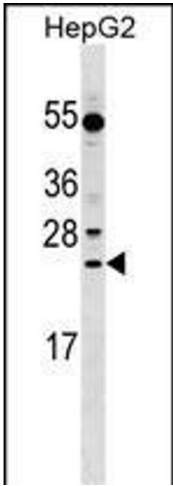
Preservative: Sodium azide

Precaution of Use: This product contains Sodium azide: a POISONOUS AND HAZARDOUS SUBSTANCE which should be handled by trained staff only.

Storage: 4 °C, -20 °C

Storage Comment: LRRC29 Antibody (N-term) can be refrigerated at 2-8 °C for up to 6 months. For long term storage, keep at -20 °C.

Expiry Date: 6 months



Western Blotting

**Image 1.** LRRC29 Antibody (N-term) (ABIN1539296 and ABIN2849306) western blot analysis in HepG2 cell line lysates (35 µg/lane). This demonstrates the LRRC29 antibody detected the LRRC29 protein (arrow).