

Datasheet for ABIN1539298
anti-PDE4A antibody (N-Term)[Go to Product page](#)

1 Image

Overview

Quantity:	400 µL
Target:	PDE4A
Binding Specificity:	AA 32-61, N-Term
Reactivity:	Human, Mouse
Host:	Rabbit
Clonality:	Polyclonal
Application:	Western Blotting (WB)

Product Details

Immunogen:	This PDE4A antibody is generated from rabbits immunized with a KLH conjugated synthetic peptide between 32-61 amino acids from the N-terminal region of human PDE4A.
Clone:	RB36661
Isotype:	Ig Fraction
Purification:	This antibody is purified through a protein A column, followed by peptide affinity purification.

Target Details

Target:	PDE4A
Alternative Name:	PDE4A (PDE4A Products)
Background:	Cyclic nucleotides are important second messengers that regulate and mediate a number of cellular responses to extracellular signals, such as hormones, light, and neurotransmitters. Cyclic nucleotide phosphodiesterases (PDEs) regulate the cellular concentrations of cyclic

Target Details

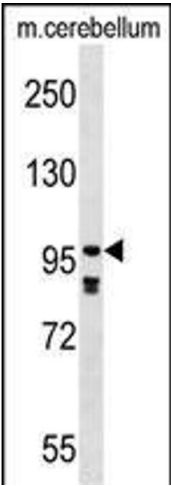
	nucleotides and thereby play a role in signal transduction. PDE4A is a class IV cAMP-specific PDE (summary by Milatovich et al., 1994 [PubMed 8009369]).
Molecular Weight:	98143
Gene ID:	5141
NCBI Accession:	NP_001104777 , NP_001104778 , NP_001104779 , NP_001230050 , NP_006193
UniProt:	P27815
Pathways:	cAMP Metabolic Process

Application Details

Application Notes:	WB: 1:1000
Restrictions:	For Research Use only

Handling

Format:	Liquid
Buffer:	Purified polyclonal antibody supplied in PBS with 0.09 % (W/V) sodium azide.
Preservative:	Sodium azide
Precaution of Use:	This product contains Sodium azide: a POISONOUS AND HAZARDOUS SUBSTANCE which should be handled by trained staff only.
Storage:	4 °C, -20 °C
Storage Comment:	PDE4A Antibody (N-term) can be refrigerated at 2-8 °C for up to 6 months. For long term storage, keep at -20 °C.
Expiry Date:	6 months



Western Blotting

Image 1. PDE4A Antibody (N-term) (ABIN1539298 and ABIN2848820) western blot analysis in mouse cerebellum tissue lysates (35 µg/lane). This demonstrates the PDE4A antibody detected the PDE4A protein (arrow).