



[Go to Product page](#)

Datasheet for ABIN1539304
anti-CHMP1A antibody (N-Term)

1 Image

Overview

Quantity:	400 µL
Target:	CHMP1A
Binding Specificity:	AA 34-61, N-Term
Reactivity:	Human
Host:	Rabbit
Clonality:	Polyclonal
Conjugate:	This CHMP1A antibody is un-conjugated
Application:	Western Blotting (WB)

Product Details

Immunogen:	This CHMP1A antibody is generated from rabbits immunized with a KLH conjugated synthetic peptide between 34-61 amino acids from the N-terminal region of human CHMP1A.
Clone:	RB30378
Isotype:	Ig Fraction
Predicted Reactivity:	M
Purification:	This antibody is purified through a protein A column, followed by peptide affinity purification.

Target Details

Target:	CHMP1A
Alternative Name:	CHMP1A (CHMP1A Products)

Target Details

Background: This gene encodes a member of the CHMP/Chmp family of proteins which are involved in multivesicular body sorting of proteins to the interiors of lysosomes. The initial prediction of the protein sequence encoded by this gene suggested that the encoded protein was a metallopeptidase. The nomenclature has been updated recently to reflect the correct biological function of this encoded protein.

Molecular Weight: 21703

Gene ID: 5119

NCBI Accession: [NP_002759](#)

UniProt: [Q9HD42](#)

Application Details

Application Notes: WB: 1:1000

Restrictions: For Research Use only

Handling

Format: Liquid

Buffer: Purified polyclonal antibody supplied in PBS with 0.09 % (W/V) sodium azide.

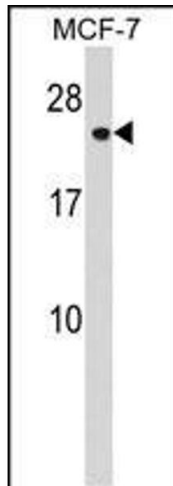
Preservative: Sodium azide

Precaution of Use: This product contains Sodium azide: a POISONOUS AND HAZARDOUS SUBSTANCE which should be handled by trained staff only.

Storage: 4 °C,-20 °C

Storage Comment: CHMP1A Antibody (N-term) can be refrigerated at 2-8 °C for up to 6 months. For long term storage, keep at -20 °C.

Expiry Date: 6 months



Western Blotting

Image 1. CHA Antibody (N-term) (ABIN1539304 and ABIN2848555) western blot analysis in MCF-7 cell line lysates (35 µg/lane). This demonstrates the CHA antibody detected the CHA protein (arrow).