



Datasheet for ABIN1539305
anti-PET112L antibody (N-Term)



[Go to Product page](#)

1 Image

Overview

Quantity:	400 µL
Target:	PET112L (PET112)
Binding Specificity:	AA 34-61, N-Term
Reactivity:	Human
Host:	Rabbit
Clonality:	Polyclonal
Application:	Western Blotting (WB)

Product Details

Immunogen:	This PET112L antibody is generated from rabbits immunized with a KLH conjugated synthetic peptide between 34-61 amino acids from the N-terminal region of human PET112L.
Clone:	RB37741
Isotype:	Ig Fraction
Purification:	This antibody is purified through a protein A column, followed by peptide affinity purification.

Target Details

Target:	PET112L (PET112)
Alternative Name:	PET112L (PET112 Products)
Background:	PET112L furnishes a means for formation of correctly charged Gln-tRNA(Gln) through the transamidation of misacylated Glu-tRNA(Gln) in the mitochondria. The reaction takes place in the presence of glutamine and ATP through an activated gamma-phospho-Glu-tRNA(Gln)

Target Details

(Potential).

Molecular Weight: 61864

Gene ID: 5188

NCBI Accession: [NP_004555](#)

UniProt: [O75879](#)

Application Details

Application Notes: WB: 1:1000

Restrictions: For Research Use only

Handling

Format: Liquid

Buffer: Purified polyclonal antibody supplied in PBS with 0.09 % (W/V) sodium azide.

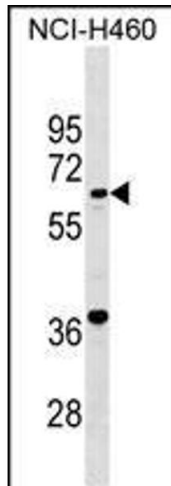
Preservative: Sodium azide

Precaution of Use: This product contains Sodium azide: a POISONOUS AND HAZARDOUS SUBSTANCE which should be handled by trained staff only.

Storage: 4 °C, -20 °C

Storage Comment: PET112L Antibody (N-term) can be refrigerated at 2-8 °C for up to 6 months. For long term storage, keep at -20 °C.

Expiry Date: 6 months



Western Blotting

Image 1. PET112L Antibody (N-term) (ABIN1539305 and ABIN2849279) western blot analysis in NCI- cell line lysates (35 µg/lane). This demonstrates the PET112L antibody detected the PET112L protein (arrow).