

Datasheet for ABIN1539324  
**anti-MPI antibody (N-Term)**[Go to Product page](#)

## 1 Image

## Overview

Quantity:	400 µL
Target:	MPI
Binding Specificity:	AA 37-65, N-Term
Reactivity:	Human
Host:	Rabbit
Clonality:	Polyclonal
Application:	Western Blotting (WB)

## Product Details

Immunogen:	This MPI antibody is generated from rabbits immunized with a KLH conjugated synthetic peptide between 37-65 amino acids from the N-terminal region of human MPI.
Clone:	RB37015
Isotype:	Ig Fraction
Predicted Reactivity:	B, M
Purification:	This antibody is purified through a protein A column, followed by peptide affinity purification.

## Target Details

Target:	MPI
Alternative Name:	MPI ( <a href="#">MPI Products</a> )
Background:	Phosphomannose isomerase catalyzes the interconversion of fructose-6-phosphate and

## Target Details

mannose-6-phosphate and plays a critical role in maintaining the supply of D-mannose derivatives, which are required for most glycosylation reactions. Mutations in the MPI gene were found in patients with carbohydrate-deficient glycoprotein syndrome, type Ib.

Molecular Weight: 46656

Gene ID: 4351

NCBI Accession: [NP\\_002426](#)

UniProt: [P34949](#)

## Application Details

Application Notes: WB: 1:1000

Restrictions: For Research Use only

## Handling

Format: Liquid

Buffer: Purified polyclonal antibody supplied in PBS with 0.09 % (W/V) sodium azide.

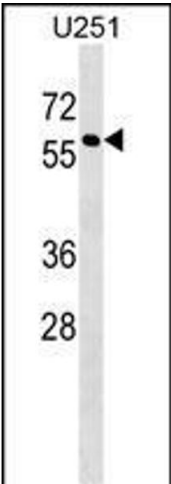
Preservative: Sodium azide

Precaution of Use: This product contains Sodium azide: a POISONOUS AND HAZARDOUS SUBSTANCE which should be handled by trained staff only.

Storage: 4 °C, -20 °C

Storage Comment: MPI Antibody (N-term) can be refrigerated at 2-8 °C for up to 6 months. For long term storage, keep at -20 °C.

Expiry Date: 6 months



Western Blotting

**Image 1.** I Antibody (N-term) (ABIN1539324 and ABIN2848738) western blot analysis in cell line lysates (35 µg/lane). This demonstrates the I antibody detected the I protein (arrow).