

Datasheet for ABIN1539332
anti-TTLL8 antibody (N-Term)[Go to Product page](#)

1 Image

Overview

Quantity:	400 µL
Target:	TTLL8
Binding Specificity:	AA 74-102, N-Term
Reactivity:	Human
Host:	Rabbit
Clonality:	Polyclonal
Application:	Western Blotting (WB)

Product Details

Immunogen:	This TTLL8 antibody is generated from rabbits immunized with a KLH conjugated synthetic peptide between 74-102 amino acids from the N-terminal region of human TTLL8.
Clone:	RB36561
Isotype:	Ig Fraction
Purification:	This antibody is purified through a protein A column, followed by peptide affinity purification.

Target Details

Target:	TTLL8
Alternative Name:	TTLL8 (TTLL8 Products)
Background:	Monoglycylase which modifies both tubulin and non-tubulin proteins, generating side chains of glycine on the gamma-carboxyl groups of specific glutamate residues of target proteins. Monoglycylates tubulin, with a preference for alpha-tubulin toward beta-tubulin. Has the ability

Target Details

to modify non-tubulin proteins such as ANP32A, ANP32B, SET and NCL. Involved in the side-chain initiation step of the glycylation reaction by adding a single glycine chain to generate monoglycine side chains. Not involved in elongation step of the polyglycylation reaction (By similarity).

Molecular Weight: 94676

Gene ID: 164714

UniProt: [A6PVC2](#)

Application Details

Application Notes: WB: 1:1000

Restrictions: For Research Use only

Handling

Format: Liquid

Buffer: Purified polyclonal antibody supplied in PBS with 0.09 % (W/V) sodium azide.

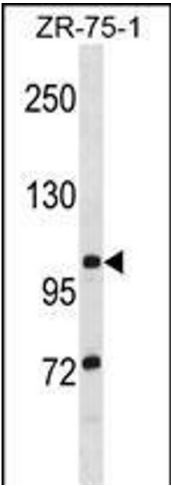
Preservative: Sodium azide

Precaution of Use: This product contains Sodium azide: a POISONOUS AND HAZARDOUS SUBSTANCE which should be handled by trained staff only.

Storage: 4 °C, -20 °C

Storage Comment: TTLL8 Antibody (N-term) can be refrigerated at 2-8 °C for up to 6 months. For long term storage, keep at -20 °C.

Expiry Date: 6 months



Western Blotting

Image 1. TTLL8 Antibody (N-term) (ABIN1539332 and ABIN2848514) western blot analysis in ZR-75-1 cell line lysates (35 µg/lane). This demonstrates the TTLL8 antibody detected the TTLL8 protein (arrow).