

Datasheet for ABIN1539345
anti-Recoverin antibody (N-Term)



[Go to Product page](#)

1 Image

Overview

Quantity:	400 µL
Target:	Recoverin (RCVRN)
Binding Specificity:	AA 39-67, N-Term
Reactivity:	Mouse
Host:	Rabbit
Clonality:	Polyclonal
Conjugate:	This Recoverin antibody is un-conjugated
Application:	Western Blotting (WB)

Product Details

Immunogen:	This Mouse Rcvrn antibody is generated from rabbits immunized with a KLH conjugated synthetic peptide between 39-67 amino acids from the N-terminal region of mouse Rcvrn.
Clone:	RB40183
Isotype:	Ig Fraction
Purification:	This antibody is purified through a protein A column, followed by peptide affinity purification.

Target Details

Target:	Recoverin (RCVRN)
Alternative Name:	Rcvrn (RCVRN Products)
Background:	Rcvrn seems to be implicated in the pathway from retinal rod guanylate cyclase to rhodopsin.

Target Details

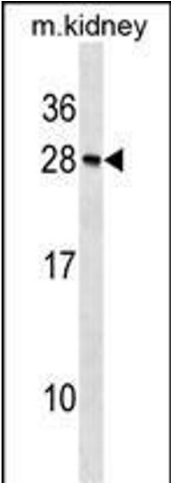
	May be involved in the inhibition of the phosphorylation of rhodopsin in a calcium-dependent manner. The calcium-bound recoverin prolongs the photoresponse.
Molecular Weight:	23407
Gene ID:	19674
NCBI Accession:	NP_033064
UniProt:	P34057
Pathways:	Regulation of G-Protein Coupled Receptor Protein Signaling, Phototransduction

Application Details

Application Notes:	WB: 1:1000
Restrictions:	For Research Use only

Handling

Format:	Liquid
Buffer:	Purified polyclonal antibody supplied in PBS with 0.09 % (W/V) sodium azide.
Preservative:	Sodium azide
Precaution of Use:	This product contains Sodium azide: a POISONOUS AND HAZARDOUS SUBSTANCE which should be handled by trained staff only.
Storage:	4 °C,-20 °C
Storage Comment:	Mouse Rcvrn Antibody (N-term) can be refrigerated at 2-8 °C for up to 6 months. For long term storage, keep at -20 °C.
Expiry Date:	6 months



Western Blotting

Image 1. Mouse Rcvrn Antibody (N-term) (ABIN1539345 and ABIN2838308) western blot analysis in mouse kidney tissue lysates (35 µg/lane). This demonstrates the Rcvrn antibody detected the Rcvrn protein (arrow).