

Datasheet for ABIN1539348
anti-CX3CR1 antibody (N-Term)[Go to Product page](#)

1 Image

Overview

Quantity:	400 µL
Target:	CX3CR1
Binding Specificity:	AA 40-69, N-Term
Reactivity:	Human
Host:	Rabbit
Clonality:	Polyclonal
Application:	Western Blotting (WB)

Product Details

Immunogen:	This CX3CR1 antibody is generated from rabbits immunized with a KLH conjugated synthetic peptide between 40-69 amino acids from the N-terminal region of human CX3CR1.
Clone:	RB36764
Isotype:	Ig Fraction
Purification:	This antibody is purified through a protein A column, followed by peptide affinity purification.

Target Details

Target:	CX3CR1
Alternative Name:	CX3CR1 (CX3CR1 Products)
Background:	Fractalkine is a transmembrane protein and chemokine involved in the adhesion and migration of leukocytes. The protein encoded by this gene is a receptor for fractalkine. The encoded protein also is a coreceptor for HIV-1, and some variations in this gene lead to increased

Target Details

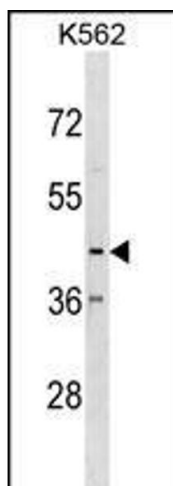
	susceptibility to HIV-1 infection and rapid progression to AIDS. Four transcript variants encoding two different isoforms have been found for this gene. [provided by RefSeq].
Molecular Weight:	40396
Gene ID:	1524
NCBI Accession:	NP_001164642 , NP_001164643 , NP_001164645 , NP_001328
UniProt:	P49238
Pathways:	Cellular Response to Molecule of Bacterial Origin

Application Details

Application Notes:	WB: 1:1000
Restrictions:	For Research Use only

Handling

Format:	Liquid
Buffer:	Purified polyclonal antibody supplied in PBS with 0.09 % (W/V) sodium azide.
Preservative:	Sodium azide
Precaution of Use:	This product contains Sodium azide: a POISONOUS AND HAZARDOUS SUBSTANCE which should be handled by trained staff only.
Storage:	4 °C, -20 °C
Storage Comment:	CX3CR1 Antibody (N-term) can be refrigerated at 2-8 °C for up to 6 months. For long term storage, keep at -20 °C.
Expiry Date:	6 months



Western Blotting

Image 1. CX3CR1 Antibody (N-term) (ABIN1539348 and ABIN2848664) western blot analysis in K562 cell line lysates (35 µg/lane). This demonstrates the CX3CR1 antibody detected the CX3CR1 protein (arrow).