



[Go to Product page](#)

Datasheet for ABIN1539360
anti-RCAN1 antibody (N-Term)

3 Images

Overview

Quantity:	400 µL
Target:	RCAN1
Binding Specificity:	AA 41-68, N-Term
Reactivity:	Human
Host:	Rabbit
Clonality:	Polyclonal
Application:	Western Blotting (WB), Immunofluorescence (IF)

Product Details

Immunogen:	This RCAN1 antibody is generated from rabbits immunized with a KLH conjugated synthetic peptide between 41-68 amino acids from the N-terminal region of human RCAN1.
Clone:	RB36242
Isotype:	Ig Fraction
Predicted Reactivity:	M
Purification:	This antibody is purified through a protein A column, followed by peptide affinity purification.

Target Details

Target:	RCAN1
Alternative Name:	RCAN1 (RCAN1 Products)
Background:	The protein encoded by this gene interacts with calcineurin A and inhibits calcineurin-

Target Details

dependent signaling pathways, possibly affecting central nervous system development. This gene is located in the minimal candidate region for the Down syndrome phenotype, and is overexpressed in the brain of Down syndrome fetuses. Chronic overexpression of this gene may lead to neurofibrillary tangles such as those associated with Alzheimer disease. Three transcript variants encoding three different isoforms have been found for this gene.

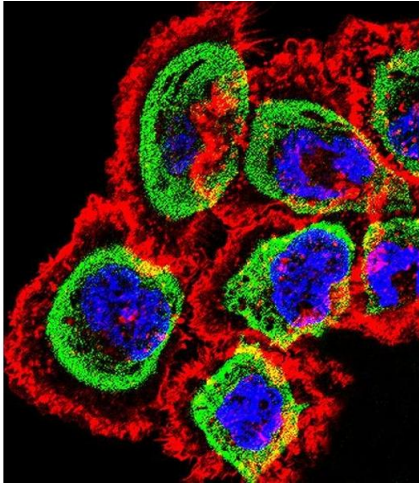
Molecular Weight:	28079
Gene ID:	1827
NCBI Accession:	NP_004405 , NP_981962 , NP_981963
UniProt:	P53805
Pathways:	Regulation of Muscle Cell Differentiation , Skeletal Muscle Fiber Development

Application Details

Application Notes:	IF: 1:10~50. WB: 1:1000. WB: 1:1000
Restrictions:	For Research Use only

Handling

Format:	Liquid
Buffer:	Purified polyclonal antibody supplied in PBS with 0.09 % (W/V) sodium azide.
Preservative:	Sodium azide
Precaution of Use:	This product contains Sodium azide: a POISONOUS AND HAZARDOUS SUBSTANCE which should be handled by trained staff only.
Storage:	4 °C, -20 °C
Storage Comment:	RCAN1 Antibody (N-term) can be refrigerated at 2-8 °C for up to 6 months. For long term storage, keep at -20 °C.
Expiry Date:	6 months



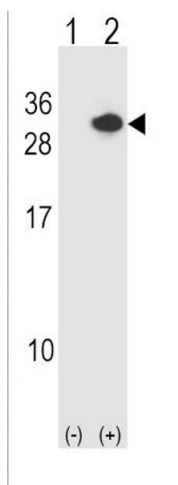
Immunofluorescence

Image 1. Fluorescent confocal image of A431 cell stained with RCAN1 Antibody (N-term) (ABIN1539360 and ABIN2848483). A431 cells were fixed with 4 % PFA (20 min), permeabilized with Triton X-100 (0.1 %, 10 min), then incubated with RCAN1 primary antibody (1:25, 1 h at 37 °C). For secondary antibody, Alexa Fluor® 488 conjugated donkey anti-rabbit antibody (green) was used (1:400, 50 min at 37 °C). Cytoplasmic actin was counterstained with Alexa Fluor® 555 (red) conjugated Phalloidin (7 units/mL, 1 h at 37 °C). Nuclei were counterstained with DAPI (blue) (10 µg/mL, 10 min). RCAN1 immunoreactivity is localized to Cytoplasm significantly.



Western Blotting

Image 2. RCAN1 Antibody (N-term) (ABIN1539360 and ABIN2848483) western blot analysis in 293 cell line lysates (35 µg/lane). This demonstrates the RCAN1 antibody detected the RCAN1 protein (arrow).



Western Blotting

Image 3. Western blot analysis of RCAN1 (arrow) using rabbit polyclonal RCAN1 Antibody (N-term) (ABIN1539360 and ABIN2848483). 293 cell lysates (2 µg/lane) either nontransfected (Lane 1) or transiently transfected (Lane 2) with the RCAN1 gene.