

Datasheet for ABIN1539374
anti-SCN5A antibody (N-Term)[Go to Product page](#)

1 Image

Overview

Quantity:	400 µL
Target:	SCN5A
Binding Specificity:	AA 42-70, N-Term
Reactivity:	Human
Host:	Rabbit
Clonality:	Polyclonal
Application:	Western Blotting (WB)

Product Details

Immunogen:	This SCN5A antibody is generated from rabbits immunized with a KLH conjugated synthetic peptide between 42-70 amino acids from the N-terminal region of human SCN5A.
Clone:	RB37446
Isotype:	Ig Fraction
Predicted Reactivity:	M, Rat
Purification:	This antibody is purified through a protein A column, followed by peptide affinity purification.

Target Details

Target:	SCN5A
Alternative Name:	SCN5A (SCN5A Products)
Background:	The protein encoded by this gene is an integral membrane protein and tetrodotoxin-resistant

Target Details

voltage-gated sodium channel subunit. This protein is found primarily in cardiac muscle and is responsible for the initial upstroke of the action potential in an electrocardiogram. Defects in this gene are a cause of long QT syndrome type 3 (LQT3), an autosomal dominant cardiac disease. Alternative splicing results in several transcript variants encoding different isoforms.

Molecular Weight: 226940

Gene ID: 6331

NCBI Accession: [NP_000326](#), [NP_001092874](#), [NP_001092875](#), [NP_001153632](#), [NP_001153633](#), [NP_932173](#)

UniProt: [Q14524](#)

Application Details

Application Notes: WB: 1:1000

Restrictions: For Research Use only

Handling

Format: Liquid

Buffer: Purified polyclonal antibody supplied in PBS with 0.09 % (W/V) sodium azide.

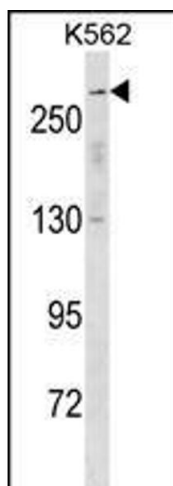
Preservative: Sodium azide

Precaution of Use: This product contains Sodium azide: a POISONOUS AND HAZARDOUS SUBSTANCE which should be handled by trained staff only.

Storage: 4 °C, -20 °C

Storage Comment: SCN5A Antibody (N-term) can be refrigerated at 2-8 °C for up to 6 months. For long term storage, keep at -20 °C.

Expiry Date: 6 months



Western Blotting

Image 1. SCN5A Antibody (N-term) (ABIN1539374 and ABIN2850330) western blot analysis in K562 cell line lysates (35 µg/lane). This demonstrates the SCN5A antibody detected the SCN5A protein (arrow).