



[Go to Product page](#)

Datasheet for ABIN1539378
anti-ITPRIPL1 antibody (N-Term)

1 Image

Overview

Quantity:	400 µL
Target:	ITPRIPL1
Binding Specificity:	AA 43-71, N-Term
Reactivity:	Human
Host:	Rabbit
Clonality:	Polyclonal
Application:	Western Blotting (WB)

Product Details

Immunogen:	This ITPRIPL1 antibody is generated from rabbits immunized with a KLH conjugated synthetic peptide between 43-71 amino acids from the N-terminal region of human ITPRIPL1.
Clone:	RB35892
Isotype:	Ig Fraction
Purification:	This antibody is purified through a protein A column, followed by peptide affinity purification.

Target Details

Target:	ITPRIPL1
Alternative Name:	ITPRIPL1 (ITPRIPL1 Products)
Background:	ITPRIPL1 (inositol 1,4,5-triphosphate receptor-interacting protein-like 1), also known as KIAA1754L, is a 555 amino acid protein belonging to the ITPRIP family. ITPRIPL1 is a single-pass type I membrane protein expressed as two isoforms produced by alternative splicing

Target Details

events. The gene that encodes ITPRIPL1 maps to human chromosome 2, the second largest human chromosome, consisting of 237 million bases encoding over 1,400 genes and making up approximately 8 % of the human genome. A number of genetic diseases are linked to genes on chromosome 2. Harlequin ichthyosis, a rare and morbid skin deformity, is associated with mutations in the ABCA12 gene. The lipid metabolic disorder sitosterolemia is associated with ABCG5 and ABCG8. An extremely rare recessive genetic disorder, Alström syndrome is due to mutations in the ALMS1 gene. It has been hypothesized that human chromosome 2 is the result of an ancient fusion of two ancestral chromosome due to its composition of a vestigial second centromere and vestigial telomeres.

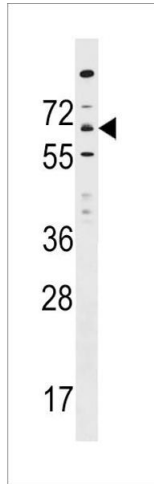
Molecular Weight:	63395
Gene ID:	150771
NCBI Accession:	NP_001008949 , NP_848590
UniProt:	Q6GPH6

Application Details

Application Notes:	WB: 1:1000
Restrictions:	For Research Use only

Handling

Format:	Liquid
Buffer:	Purified polyclonal antibody supplied in PBS with 0.09 % (W/V) sodium azide.
Preservative:	Sodium azide
Precaution of Use:	This product contains Sodium azide: a POISONOUS AND HAZARDOUS SUBSTANCE which should be handled by trained staff only.
Storage:	4 °C, -20 °C
Storage Comment:	ITPRIPL1 Antibody (N-term) can be refrigerated at 2-8 °C for up to 6 months. For long term storage, keep at -20 °C.
Expiry Date:	6 months



Western Blotting

Image 1. ITPRIPL1 Antibody (N-term) (ABIN1539378 and ABIN2848578) western blot analysis in HepG2 cell line lysates (35 µg/lane). This demonstrates the ITPRIPL1 antibody detected the ITPRIPL1 protein (arrow).