

Datasheet for ABIN1539379
anti-TKTL2 antibody (N-Term)[Go to Product page](#)

1 Image

Overview

| | |
|----------------------|--------------------------------------|
| Quantity: | 400 µL |
| Target: | TKTL2 |
| Binding Specificity: | AA 43-71, N-Term |
| Reactivity: | Human |
| Host: | Rabbit |
| Clonality: | Polyclonal |
| Conjugate: | This TKTL2 antibody is un-conjugated |
| Application: | Western Blotting (WB) |

Product Details

| | |
|---------------|--|
| Immunogen: | This TKTL2 antibody is generated from rabbits immunized with a KLH conjugated synthetic peptide between 43-71 amino acids from the N-terminal region of human TKTL2. |
| Clone: | RB37372 |
| Isotype: | Ig Fraction |
| Purification: | This antibody is purified through a protein A column, followed by peptide affinity purification. |

Target Details

| | |
|-------------------|---|
| Target: | TKTL2 |
| Alternative Name: | TKTL2 (TKTL2 Products) |
| Background: | TKTL2 plays an essential role in total transketolase activity and cell proliferation in cancer cells, |

Target Details

after transfection with anti-TKTL1 siRNA, total transketolase activity dramatically decreases and proliferation was significantly inhibited in cancer cells. Play a pivotal role in carcinogenesis.

Molecular Weight: 67877

Gene ID: 84076

NCBI Accession: [NP_115512](#)

UniProt: [Q9H0I9](#)

Application Details

Application Notes: WB: 1:1000

Restrictions: For Research Use only

Handling

Format: Liquid

Buffer: Purified polyclonal antibody supplied in PBS with 0.09 % (W/V) sodium azide.

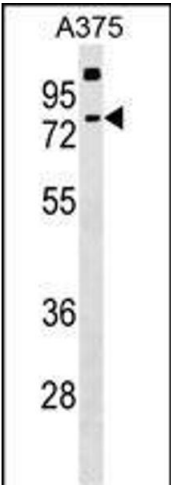
Preservative: Sodium azide

Precaution of Use: This product contains Sodium azide: a POISONOUS AND HAZARDOUS SUBSTANCE which should be handled by trained staff only.

Storage: 4 °C,-20 °C

Storage Comment: TKTL2 Antibody (N-term) can be refrigerated at 2-8 °C for up to 6 months. For long term storage, keep at -20 °C.

Expiry Date: 6 months



Western Blotting

Image 1. TKTL2 Antibody (N-term) (ABIN1539379 and ABIN2848983) western blot analysis in cell line lysates (35 µg/lane). This demonstrates the TKTL2 antibody detected the TKTL2 protein (arrow).