



Datasheet for ABIN1539385

anti-Membrane-Spanning 4-Domains, Subfamily A, Member 8 (MS4A8) (AA 44-70), (N-Term) antibody



[Go to Product page](#)

1 Image

Overview

Quantity:	400 µL
Target:	Membrane-Spanning 4-Domains, Subfamily A, Member 8 (MS4A8)
Binding Specificity:	AA 44-70, N-Term
Reactivity:	Human
Host:	Rabbit
Clonality:	Polyclonal
Application:	Western Blotting (WB)

Product Details

Immunogen:	This MS4A8B antibody is generated from rabbits immunized with a KLH conjugated synthetic peptide between 44-70 amino acids from the N-terminal region of human MS4A8B.
Clone:	RB38306
Isotype:	Ig Fraction
Purification:	This antibody is purified through a protein A column, followed by peptide affinity purification.

Target Details

Target:	Membrane-Spanning 4-Domains, Subfamily A, Member 8 (MS4A8)
Alternative Name:	MS4A8B (MS4A8 Products)
Background:	This gene encodes a member of the membrane-spanning 4A gene family. Members of this protein family are characterized by common structural features and similar intron/exon splice boundaries and display unique expression patterns among hematopoietic cells and

Target Details

nonlymphoid tissues. The gene encoding this protein is localized to 11q12.3, among a cluster of family members.

Molecular Weight: 26290

Gene ID: 83661

NCBI Accession: [NP_113645](#)

UniProt: [Q9BY19](#)

Application Details

Application Notes: WB: 1:1000

Restrictions: For Research Use only

Handling

Format: Liquid

Buffer: Purified polyclonal antibody supplied in PBS with 0.09 % (W/V) sodium azide.

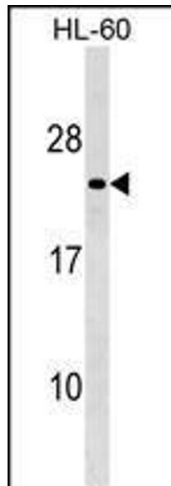
Preservative: Sodium azide

Precaution of Use: This product contains Sodium azide: a POISONOUS AND HAZARDOUS SUBSTANCE which should be handled by trained staff only.

Storage: 4 °C, -20 °C

Storage Comment: MS4A8B Antibody (N-term) can be refrigerated at 2-8 °C for up to 6 months. For long term storage, keep at -20 °C.

Expiry Date: 6 months



Western Blotting

Image 1. MS4A8B Antibody (N-term) (ABIN1539385 and ABIN2849602) western blot analysis in HL-60 cell line lysates (35 µg/lane). This demonstrates the MS4A8B antibody detected the MS4A8B protein (arrow).