



Datasheet for ABIN1539391
anti-LDHAL6B antibody (N-Term)



[Go to Product page](#)

1 Image

Overview

Quantity:	400 µL
Target:	LDHAL6B
Binding Specificity:	AA 45-71, N-Term
Reactivity:	Human
Host:	Rabbit
Clonality:	Polyclonal
Application:	Western Blotting (WB)

Product Details

Immunogen:	This LDHAL6B antibody is generated from rabbits immunized with a KLH conjugated synthetic peptide between 45-71 amino acids from the N-terminal region of human LDHAL6B.
Clone:	RB38283
Isotype:	Ig Fraction
Purification:	This antibody is purified through a protein A column, followed by peptide affinity purification.

Target Details

Target:	LDHAL6B
Alternative Name:	LDHAL6B (LDHAL6B Products)
Background:	LDHAL6B belongs to the LDH/MDH superfamily. LDH family. The specific function of the protein remains unknown.

Target Details

Molecular Weight:	41943
Gene ID:	92483
NCBI Accession:	NP_149972
UniProt:	Q9BYZ2

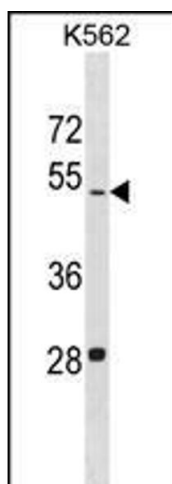
Application Details

Application Notes:	WB: 1:1000
Restrictions:	For Research Use only

Handling

Format:	Liquid
Buffer:	Purified polyclonal antibody supplied in PBS with 0.09 % (W/V) sodium azide.
Preservative:	Sodium azide
Precaution of Use:	This product contains Sodium azide: a POISONOUS AND HAZARDOUS SUBSTANCE which should be handled by trained staff only.
Storage:	4 °C, -20 °C
Storage Comment:	LDHAL6B Antibody (N-term) can be refrigerated at 2-8 °C for up to 6 months. For long term storage, keep at -20 °C.
Expiry Date:	6 months

Images



Western Blotting

Image 1. LDHAL6B Antibody (N-term) (ABIN1539391 and ABIN2849977) western blot analysis in K562 cell line lysates (35 µg/lane). This demonstrates the LDHAL6B antibody detected the LDHAL6B protein (arrow).