

Datasheet for ABIN1539402  
**anti-T-Box 15 antibody (N-Term)**

## 2 Images

[Go to Product page](#)

## Overview

Quantity:	400 µL
Target:	T-Box 15 (TBX15)
Binding Specificity:	AA 47-73, N-Term
Reactivity:	Human, Mouse
Host:	Rabbit
Clonality:	Polyclonal
Conjugate:	This T-Box 15 antibody is un-conjugated
Application:	Western Blotting (WB), Immunofluorescence (IF)

## Product Details

Immunogen:	This TBX15 antibody is generated from rabbits immunized with a KLH conjugated synthetic peptide between 47-73 amino acids from the N-terminal region of human TBX15.
Clone:	RB38365
Isotype:	Ig Fraction
Purification:	This antibody is purified through a protein A column, followed by peptide affinity purification.

## Target Details

Target:	T-Box 15 (TBX15)
Alternative Name:	TBX15 ( <a href="#">TBX15 Products</a> )
Background:	Probable transcriptional regulator involved in developmental processes.

## Target Details

Molecular Weight:	65757
Gene ID:	6913
NCBI Accession:	<a href="#">NP_689593</a>
UniProt:	<a href="#">Q96SF7</a>

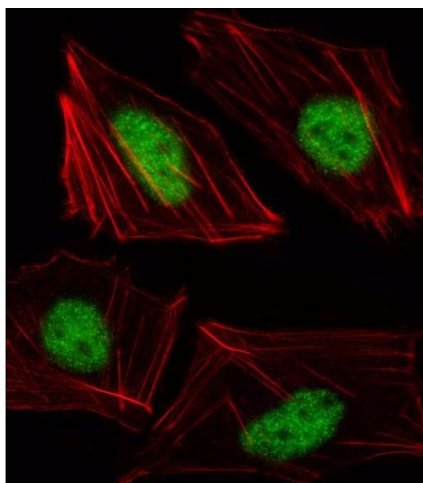
## Application Details

Application Notes:	IF: 1:10~50. WB: 1:1000
Restrictions:	For Research Use only

## Handling

Format:	Liquid
Buffer:	Purified polyclonal antibody supplied in PBS with 0.09 % (W/V) sodium azide.
Preservative:	Sodium azide
Precaution of Use:	This product contains Sodium azide: a POISONOUS AND HAZARDOUS SUBSTANCE which should be handled by trained staff only.
Storage:	4 °C, -20 °C
Storage Comment:	TBX15 Antibody (N-term) can be refrigerated at 2-8 °C for up to 6 months. For long term storage, keep at -20 °C.
Expiry Date:	6 months

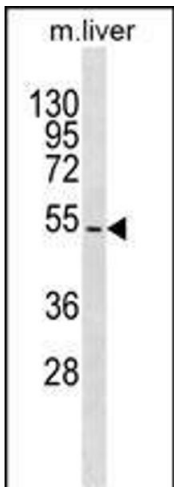
## Images



### Immunofluorescence

**Image 1.** Fluorescent image of HUVEC cell stained with TBX15 Antibody (N-term) (ABIN1539402 and ABIN2849989). HUVEC cells were fixed with 4 % PFA (20 min), permeabilized with Triton X-100 (0.1 %, 10 min), then incubated with TBX15 primary antibody (1:25, 1 h at 37 °C). For secondary antibody, Alexa Fluor® 488 conjugated donkey anti-rabbit antibody (green) was used (1:400, 50 min at 37 °C). Cytoplasmic actin was

counterstained with Alexa Fluor® 555 (red) conjugated Phalloidin (7 units/mL, 1 h at 37 °C).TBX15 immunoreactivity is localized to Nucleus significantly.



Western Blotting

**Image 2.** TBX15 Antibody (N-term) (ABIN1539402 and ABIN2849989) western blot analysis in mouse liver tissue lysates (35 µg/lane).This demonstrates the TBX15 antibody detected the TBX15 protein (arrow).