



[Go to Product page](#)

Datasheet for ABIN1539414

anti-Phospholipase D4 antibody (N-Term)

1 Image

Overview

Quantity:	400 µL
Target:	Phospholipase D4 (PLD4)
Binding Specificity:	AA 50-76, N-Term
Reactivity:	Human
Host:	Rabbit
Clonality:	Polyclonal
Conjugate:	This Phospholipase D4 antibody is un-conjugated
Application:	Western Blotting (WB)

Product Details

Immunogen:	This PLD4 antibody is generated from rabbits immunized with a KLH conjugated synthetic peptide between 50-76 amino acids from the N-terminal region of human PLD4.
Clone:	RB37963
Isotype:	Ig Fraction
Purification:	This antibody is purified through a protein A column, followed by peptide affinity purification.

Target Details

Target:	Phospholipase D4 (PLD4)
Alternative Name:	PLD4 (PLD4 Products)
Molecular Weight:	55626

Target Details

Gene ID: 122618

NCBI Accession: [NP_620145](#)

UniProt: [Q96BZ4](#)

Application Details

Application Notes: WB: 1:1000

Restrictions: For Research Use only

Handling

Format: Liquid

Buffer: Purified polyclonal antibody supplied in PBS with 0.09 % (W/V) sodium azide.

Preservative: Sodium azide

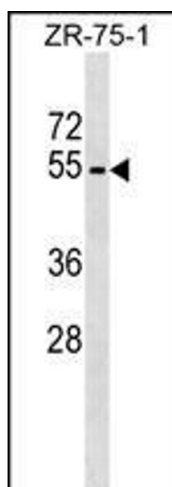
Precaution of Use: This product contains Sodium azide: a POISONOUS AND HAZARDOUS SUBSTANCE which should be handled by trained staff only.

Storage: 4 °C, -20 °C

Storage Comment: PLD4 Antibody (N-term) can be refrigerated at 2-8 °C for up to 6 months. For long term storage, keep at -20 °C.

Expiry Date: 6 months

Images



Western Blotting

Image 1. PLD4 Antibody (N-term) (ABIN1539414 and ABIN2849223) western blot analysis in ZR-75-1 cell line lysates (35 µg/lane). This demonstrates the PLD4 antibody detected the PLD4 protein (arrow).