

Datasheet for ABIN1539415
anti-PPP1R1C antibody (N-Term)

1 Image

[Go to Product page](#)

Overview

Quantity:	400 µL
Target:	PPP1R1C
Binding Specificity:	AA 50-76, N-Term
Reactivity:	Mouse
Host:	Rabbit
Clonality:	Polyclonal
Application:	Western Blotting (WB)

Product Details

Immunogen:	This PPP1R1C antibody is generated from rabbits immunized with a KLH conjugated synthetic peptide between 50-76 amino acids from the N-terminal region of human PPP1R1C.
Clone:	RB30466
Isotype:	Ig Fraction
Purification:	This antibody is purified through a protein A column, followed by peptide affinity purification.

Target Details

Target:	PPP1R1C
Alternative Name:	PPP1R1C (PPP1R1C Products)
Background:	Protein phosphatase-1 (PP1) is a major serine/threonine phosphatase that regulates a variety of cellular functions. PP1 consists of a catalytic subunit (see PPP1CA, MIM 176875) and regulatory subunits that determine the subcellular localization of PP1 or regulate its function.

Target Details

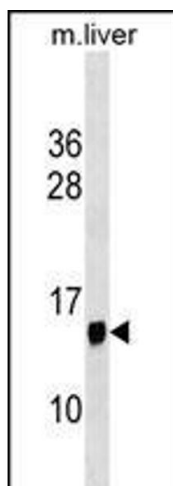
	PPP1R1C belongs to a group of PP1 inhibitory subunits that are themselves regulated by phosphorylation (Wang et al., 2008 [PubMed 18310074]).[supplied by OMIM].
Molecular Weight:	12346
Gene ID:	151242
NCBI Accession:	NP_001074014 , NP_001248353 , NP_001248354
UniProt:	Q8WV17

Application Details

Application Notes:	WB: 1:1000
Restrictions:	For Research Use only

Handling

Format:	Liquid
Buffer:	Purified polyclonal antibody supplied in PBS with 0.09 % (W/V) sodium azide.
Preservative:	Sodium azide
Precaution of Use:	This product contains Sodium azide: a POISONOUS AND HAZARDOUS SUBSTANCE which should be handled by trained staff only.
Storage:	4 °C,-20 °C
Storage Comment:	PPP1R1C Antibody (N-term) can be refrigerated at 2-8 °C for up to 6 months. For long term storage, keep at -20 °C.
Expiry Date:	6 months



Western Blotting

Image 1. P1R1C Antibody (N-term) (ABIN1539415 and ABIN2850159) western blot analysis in mouse liver tissue lysates (35 µg/lane). This demonstrates the P1R1C antibody detected the P1R1C protein (arrow).