

Datasheet for ABIN1539416
anti-MRPL19 antibody (N-Term)[Go to Product page](#)

1 Image

Overview

| | |
|----------------------|-----------------------|
| Quantity: | 400 µL |
| Target: | MRPL19 |
| Binding Specificity: | AA 49-76, N-Term |
| Reactivity: | Human |
| Host: | Rabbit |
| Clonality: | Polyclonal |
| Application: | Western Blotting (WB) |

Product Details

| | |
|---------------|--|
| Immunogen: | This MRPL19 antibody is generated from rabbits immunized with a KLH conjugated synthetic peptide between 49-76 amino acids from the N-terminal region of human MRPL19. |
| Clone: | RB39837 |
| Isotype: | Ig Fraction |
| Purification: | This antibody is purified through a protein A column, followed by peptide affinity purification. |

Target Details

| | |
|-------------------|---|
| Target: | MRPL19 |
| Alternative Name: | MRPL19 (MRPL19 Products) |
| Background: | Mammalian mitochondrial ribosomal proteins are encoded by nuclear genes and help in protein synthesis within the mitochondrion. Mitochondrial ribosomes (mitoribosomes) consist of a small 28S subunit and a large 39S subunit. They have an estimated 75 % protein to rRNA |

Target Details

composition compared to prokaryotic ribosomes, where this ratio is reversed. Another difference between mammalian mitoribosomes and prokaryotic ribosomes is that the latter contain a 5S rRNA. Among different species, the proteins comprising the mitoribosome differ greatly in sequence, and sometimes in biochemical properties, which prevents easy recognition by sequence homology. This gene encodes a 39S subunit protein. [provided by RefSeq].

Molecular Weight: 33535

Gene ID: 9801

NCBI Accession: [NP_055578](#)

UniProt: [P49406](#)

Application Details

Application Notes: WB: 1:1000

Restrictions: For Research Use only

Handling

Format: Liquid

Buffer: Purified polyclonal antibody supplied in PBS with 0.09 % (W/V) sodium azide.

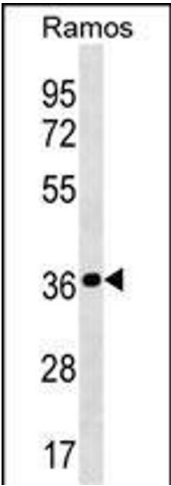
Preservative: Sodium azide

Precaution of Use: This product contains Sodium azide: a POISONOUS AND HAZARDOUS SUBSTANCE which should be handled by trained staff only.

Storage: 4 °C,-20 °C

Storage Comment: MRPL19 Antibody (N-term) can be refrigerated at 2-8 °C for up to 6 months. For long term storage, keep at -20 °C.

Expiry Date: 6 months



Western Blotting

Image 1. MRPL19 Antibody (N-term) (ABIN1539416 and ABIN2838298) western blot analysis in Ramos cell line lysates (35 µg/lane). This demonstrates the MRPL19 antibody detected the MRPL19 protein (arrow).