



[Go to Product page](#)

Datasheet for ABIN1539418  
**anti-PIN4 antibody (N-Term)**

1 Image

### Overview

Quantity:	400 µL
Target:	PIN4
Binding Specificity:	AA 6-32, N-Term
Reactivity:	Human
Host:	Rabbit
Clonality:	Polyclonal
Application:	Western Blotting (WB)

### Product Details

Immunogen:	This PIN4 antibody is generated from rabbits immunized with a KLH conjugated synthetic peptide between 6-32 amino acids from the N-terminal region of human PIN4.
Clone:	RB38611
Isotype:	Ig Fraction
Purification:	This antibody is purified through a protein A column, followed by peptide affinity purification.

### Target Details

Target:	PIN4
Alternative Name:	PIN4 ( <a href="#">PIN4 Products</a> )
Background:	This gene encodes a member of the parvulin subfamily of the peptidyl-prolyl cis/trans isomerase protein family. The encoded protein catalyzes the isomerization of peptidylprolyl bonds, and may play a role in the cell cycle, chromatin remodeling, and/or ribosome biogenesis.

## Target Details

---

The encoded protein may play an additional role in the mitochondria.

Molecular Weight: 13810

Gene ID: 5303

NCBI Accession: [NP\\_001164218](#), [NP\\_006214](#)

UniProt: [Q9Y237](#)

## Application Details

---

Application Notes: WB: 1:1000

Restrictions: For Research Use only

## Handling

---

Format: Liquid

Buffer: Purified polyclonal antibody supplied in PBS with 0.09 % (W/V) sodium azide.

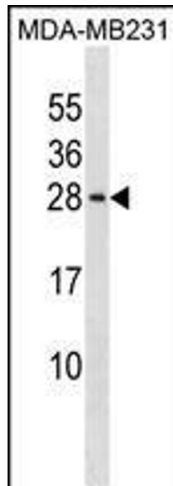
Preservative: Sodium azide

Precaution of Use: This product contains Sodium azide: a POISONOUS AND HAZARDOUS SUBSTANCE which should be handled by trained staff only.

Storage: 4 °C, -20 °C

Storage Comment: PIN4 Antibody (N-term) can be refrigerated at 2-8 °C for up to 6 months. For long term storage, keep at -20 °C.

Expiry Date: 6 months



### Western Blotting

**Image 1.** PIN4 Antibody (N-term) (ABIN1539418 and ABIN2850027) western blot analysis in MDA-M cell line lysates (35 µg/lane). This demonstrates the PIN4 antibody detected the PIN4 protein (arrow).