



[Go to Product page](#)

Datasheet for ABIN1539423
anti-TPP1 antibody (N-Term)

1 Image

Overview

Quantity:	400 µL
Target:	TPP1
Binding Specificity:	AA 6-34, N-Term
Reactivity:	Human
Host:	Rabbit
Clonality:	Polyclonal
Application:	Western Blotting (WB)

Product Details

Immunogen:	This TPP1 antibody is generated from rabbits immunized with a KLH conjugated synthetic peptide between 6-34 amino acids from the N-terminal region of human TPP1.
Clone:	RB36843
Isotype:	Ig Fraction
Predicted Reactivity:	Pr
Purification:	This antibody is purified through a protein A column, followed by peptide affinity purification.

Target Details

Target:	TPP1
Alternative Name:	TPP1 (TPP1 Products)
Background:	This gene encodes a member of the sedolisin family of serine proteases. The protease

Target Details

functions in the lysosome to cleave N-terminal tripeptides from substrates, and has weaker endopeptidase activity. It is synthesized as a catalytically-inactive enzyme which is activated and auto-proteolyzed upon acidification. Mutations in this gene result in late-infantile neuronal ceroid lipofuscinosis, which is associated with the failure to degrade specific neuropeptides and a subunit of ATP synthase in the lysosome.

Molecular Weight: 61248

Gene ID: 1200

NCBI Accession: [NP_000382](#)

UniProt: [O14773](#)

Pathways: [Cell Division Cycle](#), [ER-Nucleus Signaling](#)

Application Details

Application Notes: WB: 1:1000

Restrictions: For Research Use only

Handling

Format: Liquid

Buffer: Purified polyclonal antibody supplied in PBS with 0.09 % (W/V) sodium azide.

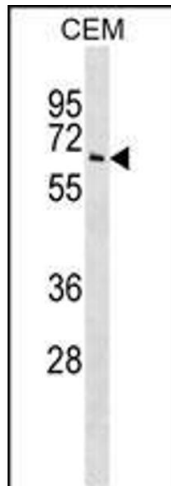
Preservative: Sodium azide

Precaution of Use: This product contains Sodium azide: a POISONOUS AND HAZARDOUS SUBSTANCE which should be handled by trained staff only.

Storage: 4 °C, -20 °C

Storage Comment: TPP1 Antibody (N-term) can be refrigerated at 2-8 °C for up to 6 months. For long term storage, keep at -20 °C.

Expiry Date: 6 months



Western Blotting

Image 1. T Antibody (N-term) (ABIN1539423 and ABIN2848697) western blot analysis in CEM cell line lysates (35 µg/lane). This demonstrates the T antibody detected the T protein (arrow).