

Datasheet for ABIN1539426
anti-SYTL4 antibody (N-Term)[Go to Product page](#)

1 Image

Overview

Quantity:	400 µL
Target:	SYTL4
Binding Specificity:	AA 5-34, N-Term
Reactivity:	Human
Host:	Rabbit
Clonality:	Polyclonal
Application:	Western Blotting (WB)

Product Details

Immunogen:	This SYTL4 antibody is generated from rabbits immunized with a KLH conjugated synthetic peptide between 5-34 amino acids from the N-terminal region of human SYTL4.
Clone:	RB39192
Isotype:	Ig Fraction
Purification:	This antibody is purified through a protein A column, followed by peptide affinity purification.

Target Details

Target:	SYTL4
Alternative Name:	SYTL4 (SYTL4 Products)
Background:	<p>This gene encodes a member of the synaptotagmin like protein family. Members of this family are characterized by an N-terminal Rab27 binding domain and C-terminal tandem C2 domains.</p> <p>The encoded protein binds specific small Rab GTPases and is involved in intracellular</p>

Target Details

membrane trafficking. This protein binds Rab27 and may be involved in inhibiting dense core vesicle exocytosis. Alternate splicing results in multiple transcript variants that encode the same protein.

Molecular Weight: 76024

Gene ID: 94121

NCBI Accession: [NP_001123368](#), [NP_001167539](#), [NP_542775](#)

UniProt: [Q96C24](#)

Pathways: [Negative Regulation of Hormone Secretion](#)

Application Details

Application Notes: WB: 1:1000

Restrictions: For Research Use only

Handling

Format: Liquid

Buffer: Purified polyclonal antibody supplied in PBS with 0.09 % (W/V) sodium azide.

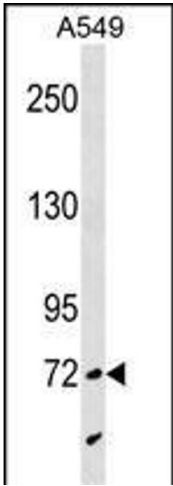
Preservative: Sodium azide

Precaution of Use: This product contains Sodium azide: a POISONOUS AND HAZARDOUS SUBSTANCE which should be handled by trained staff only.

Storage: 4 °C, -20 °C

Storage Comment: SYTL4 Antibody (N-term) can be refrigerated at 2-8 °C for up to 6 months. For long term storage, keep at -20 °C.

Expiry Date: 6 months



Western Blotting

Image 1. SYTL4 Antibody (N-term) (ABIN1539426 and ABIN2850356) western blot analysis in A549 cell line lysates (35 µg/lane). This demonstrates the SYTL4 antibody detected the SYTL4 protein (arrow).