

Datasheet for ABIN1539429
anti-SPRY2 antibody (N-Term)[Go to Product page](#)

1 Image

Overview

Quantity:	400 µL
Target:	SPRY2
Binding Specificity:	AA 6-35, N-Term
Reactivity:	Human, Mouse
Host:	Rabbit
Clonality:	Polyclonal
Conjugate:	This SPRY2 antibody is un-conjugated
Application:	Western Blotting (WB)

Product Details

Immunogen:	This SPRY2 antibody is generated from rabbits immunized with a KLH conjugated synthetic peptide between 6-35 amino acids from the N-terminal region of human SPRY2.
Clone:	RB36778
Isotype:	Ig Fraction
Predicted Reactivity:	Pr
Purification:	This antibody is purified through a protein A column, followed by peptide affinity purification.

Target Details

Target:	SPRY2
Alternative Name:	SPRY2 (SPRY2 Products)

Target Details

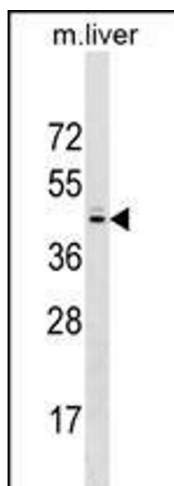
Background:	This gene encodes a protein belonging to the sprouty family. The encoded protein contains a carboxyl-terminal cysteine-rich domain essential for the inhibitory activity on receptor tyrosine kinase signaling proteins and is required for growth factor stimulated translocation of the protein to membrane ruffles. In primary dermal endothelial cells this gene is transiently upregulated in response to fibroblast growth factor two. This protein is indirectly involved in the non-cell autonomous inhibitory effect on fibroblast growth factor two signaling. The protein interacts with Cas-Br-M (murine) ectropic retroviral transforming sequence, and can function as a bimodal regulator of epidermal growth factor receptor/mitogen-activated protein kinase signaling. This protein may play a role in alveoli branching during lung development as shown by a similar mouse protein. [provided by RefSeq].
Molecular Weight:	34688
Gene ID:	10253
NCBI Accession:	NP_005833
UniProt:	O43597
Pathways:	EGFR Signaling Pathway , Sensory Perception of Sound , EGFR Downregulation

Application Details

Application Notes:	WB: 1:1000
Restrictions:	For Research Use only

Handling

Format:	Liquid
Buffer:	Purified polyclonal antibody supplied in PBS with 0.09 % (W/V) sodium azide.
Preservative:	Sodium azide
Precaution of Use:	This product contains Sodium azide: a POISONOUS AND HAZARDOUS SUBSTANCE which should be handled by trained staff only.
Storage:	4 °C,-20 °C
Storage Comment:	SPRY2 Antibody (N-term) can be refrigerated at 2-8 °C for up to 6 months. For long term storage, keep at -20 °C.
Expiry Date:	6 months



Western Blotting

Image 1. SPRY2 Antibody (N-term) (ABIN1539429 and ABIN2849025) western blot analysis in mouse liver tissue lysates (35 µg/lane). This demonstrates the SPRY2 antibody detected the SPRY2 protein (arrow).