

Datasheet for ABIN1539441
anti-TBR1 antibody (N-Term)[Go to Product page](#)

1 Image

Overview

Quantity:	400 µL
Target:	TBR1
Binding Specificity:	AA 52-80, N-Term
Reactivity:	Human, Mouse
Host:	Rabbit
Clonality:	Polyclonal
Application:	Western Blotting (WB)

Product Details

Immunogen:	This TBR1 antibody is generated from rabbits immunized with a KLH conjugated synthetic peptide between 52-80 amino acids from the N-terminal region of human TBR1.
Clone:	RB36695
Isotype:	Ig Fraction
Purification:	This antibody is purified through a protein A column, followed by peptide affinity purification.

Target Details

Target:	TBR1
Alternative Name:	TBR1 (TBR1 Products)
Background:	This gene is a member of a conserved family of genes that share a common DNA-binding domain, the T-box. T-box genes encode transcription factors involved in the regulation of developmental processes. A similar protein has been disrupted in mice and shown to be critical

Target Details

for early cortical development, and causes loss of projection neurons in the olfactory bulbs and olfactory cortex. The C-terminal region this similar protein was found to be necessary and sufficient for association with the guanylate kinase domain of calcium/calmodulin-dependent serine protein kinase. [provided by RefSeq].

Molecular Weight: 74053

Gene ID: 10716

NCBI Accession: [NP_006584](#)

UniProt: [Q16650](#)

Application Details

Application Notes: WB: 1:1000

Restrictions: For Research Use only

Handling

Format: Liquid

Buffer: Purified polyclonal antibody supplied in PBS with 0.09 % (W/V) sodium azide.

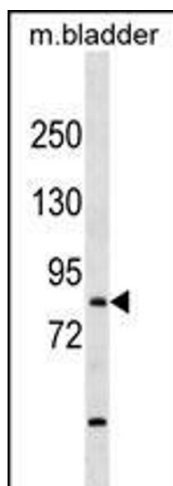
Preservative: Sodium azide

Precaution of Use: This product contains Sodium azide: a POISONOUS AND HAZARDOUS SUBSTANCE which should be handled by trained staff only.

Storage: 4 °C, -20 °C

Storage Comment: TBR1 Antibody (N-term) can be refrigerated at 2-8 °C for up to 6 months. For long term storage, keep at -20 °C.

Expiry Date: 6 months



Western Blotting

Image 1. TBR1 Antibody (N-term) (ABIN1539441 and ABIN2849336) western blot analysis in mouse bladder tissue lysates (35 µg/lane). This demonstrates the TBR1 antibody detected the TBR1 protein (arrow).