



[Go to Product page](#)

Datasheet for ABIN1539448
anti-PNMA6A antibody (N-Term)

1 Image

Overview

Quantity:	400 µL
Target:	PNMA6A
Binding Specificity:	AA 53-80, N-Term
Reactivity:	Human
Host:	Rabbit
Clonality:	Polyclonal
Conjugate:	This PNMA6A antibody is un-conjugated
Application:	Western Blotting (WB)

Product Details

Immunogen:	This PNMA6A antibody is generated from rabbits immunized with a KLH conjugated synthetic peptide between 53-80 amino acids from the N-terminal region of human PNMA6A.
Clone:	RB39626
Isotype:	Ig Fraction
Purification:	This antibody is purified through a protein A column, followed by peptide affinity purification.

Target Details

Target:	PNMA6A
Alternative Name:	PNMA6A (PNMA6A Products)
Background:	The function of this protein remains unknown.

Target Details

Molecular Weight:	43875
Gene ID:	84968
NCBI Accession:	NP_116271
UniProt:	P0CW24

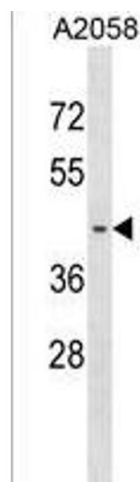
Application Details

Application Notes:	WB: 1:1000
Restrictions:	For Research Use only

Handling

Format:	Liquid
Buffer:	Purified polyclonal antibody supplied in PBS with 0.09 % (W/V) sodium azide.
Preservative:	Sodium azide
Precaution of Use:	This product contains Sodium azide: a POISONOUS AND HAZARDOUS SUBSTANCE which should be handled by trained staff only.
Storage:	4 °C, -20 °C
Storage Comment:	PNMA6A Antibody (N-term) can be refrigerated at 2-8 °C for up to 6 months. For long term storage, keep at -20 °C.
Expiry Date:	6 months

Images



Western Blotting

Image 1. PNA Antibody (N-term) (ABIN1539448 and ABIN2850280) western blot analysis in cell line lysates (35 µg/lane). This demonstrates the PNA antibody detected the PNA protein (arrow).