

Datasheet for ABIN1539451  
**anti-TET2 antibody (N-Term)**

## 2 Images

[Go to Product page](#)

## Overview

Quantity:	400 µL
Target:	TET2
Binding Specificity:	AA 528-554, N-Term
Reactivity:	Human
Host:	Rabbit
Clonality:	Polyclonal
Application:	Western Blotting (WB), Immunohistochemistry (Paraffin-embedded Sections) (IHC (p))

## Product Details

Immunogen:	This TET2 antibody is generated from rabbits immunized with a KLH conjugated synthetic peptide between 528-554 amino acids from the N-terminal region of human TET2.
Clone:	RB37907
Isotype:	Ig Fraction
Purification:	This antibody is purified through a protein A column, followed by peptide affinity purification.

## Target Details

Target:	TET2
Alternative Name:	TET2 ( <a href="#">TET2 Products</a> )
Background:	TET2 may catalyze the conversion of methylcytosine (5mC) to 5-hydroxymethylcytosine (hmC) (By similarity). Play an important role in the regulation of myelopoiesis.

## Target Details

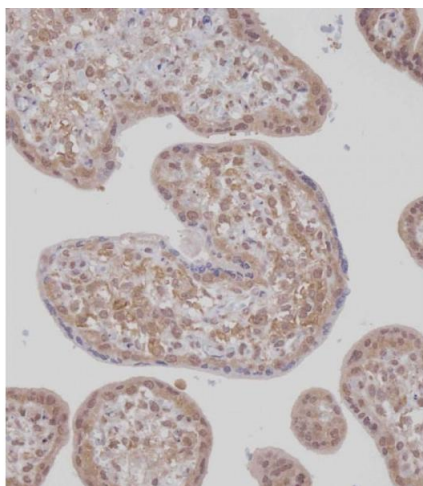
Molecular Weight:	223811
Gene ID:	54790
NCBI Accession:	<a href="#">NP_001120680</a> , <a href="#">NP_060098</a>
UniProt:	<a href="#">Q6N021</a>
Pathways:	<a href="#">Warburg Effect</a>

## Application Details

Application Notes:	WB: 1:2000. IHC-P: 1:100
Restrictions:	For Research Use only

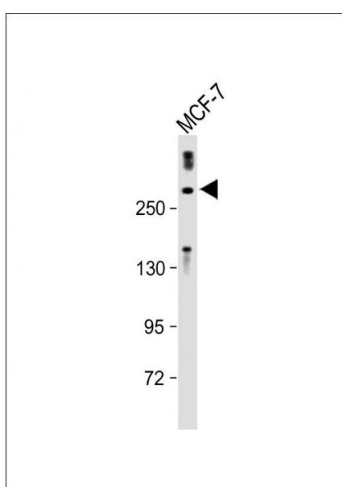
## Handling

Format:	Liquid
Buffer:	Purified polyclonal antibody supplied in PBS with 0.09 % (W/V) sodium azide.
Preservative:	Sodium azide
Precaution of Use:	This product contains Sodium azide: a POISONOUS AND HAZARDOUS SUBSTANCE which should be handled by trained staff only.
Storage:	4 °C,-20 °C
Storage Comment:	TET2 Antibody (N-term) can be refrigerated at 2-8 °C for up to 6 months. For long term storage, keep at -20 °C.
Expiry Date:	6 months



#### Immunohistochemistry (Paraffin-embedded Sections)

**Image 1.** Immunohistochemical analysis of (ABIN1539451 and ABIN2848995) on paraffin-embedded Human placenta tissue. Tissue was fixed with formaldehyde at room temperature. Heat induced epitope retrieval was performed by EDTA buffer (pH 9.0). Samples were incubated with primary Antibody (1:100) for 1 hour at room temperature. Undiluted CRP Anti-Polyvalent HRP Polymer antibody was used as the secondary antibody.



#### Western Blotting

**Image 2.** Anti-TET2 Antibody (N-term) at 1:2000 dilution + MCF-7 whole cell lysate Lysates/proteins at 20 µg per lane. Secondary Goat Anti-Rabbit IgG, (H+L), Peroxidase conjugated at 1/10000 dilution. Predicted band size : 224 kDa Blocking/Dilution buffer: 5 % NFDM/TBST.