

Datasheet for ABIN1539454
anti-Septin 1 antibody (N-Term)[Go to Product page](#)

1 Image

Overview

Quantity:	400 µL
Target:	Septin 1 (SEPT1)
Binding Specificity:	AA 54-82, N-Term
Reactivity:	Human
Host:	Rabbit
Clonality:	Polyclonal
Conjugate:	This Septin 1 antibody is un-conjugated
Application:	Western Blotting (WB)

Product Details

Immunogen:	This SEPT1 antibody is generated from rabbits immunized with a KLH conjugated synthetic peptide between 54-82 amino acids from the N-terminal region of human SEPT1.
Clone:	RB36855
Isotype:	Ig Fraction
Purification:	This antibody is purified through a protein A column, followed by peptide affinity purification.

Target Details

Target:	Septin 1 (SEPT1)
Alternative Name:	SEPT1 (SEPT1 Products)
Background:	This gene is a member of the septin family of GTPases. Members of this family are required for

Target Details

cytokinesis. This gene encodes a protein associated with the tau-based paired helical filament core, and may contribute to the formation of neurofibrillary tangles in Alzheimer's disease. [provided by RefSeq].

Molecular Weight: 41971

Gene ID: 1731

NCBI Accession: [NP_443070](#)

UniProt: [Q8WYJ6](#)

Application Details

Application Notes: WB: 1:1000

Restrictions: For Research Use only

Handling

Format: Liquid

Buffer: Purified polyclonal antibody supplied in PBS with 0.09 % (W/V) sodium azide.

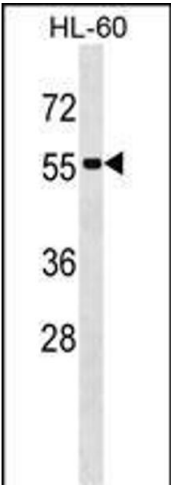
Preservative: Sodium azide

Precaution of Use: This product contains Sodium azide: a POISONOUS AND HAZARDOUS SUBSTANCE which should be handled by trained staff only.

Storage: 4 °C, -20 °C

Storage Comment: SEPT1 Antibody (N-term) can be refrigerated at 2-8°C for up to 6 months. For long term storage, keep at -20°C.

Expiry Date: 6 months



Western Blotting

Image 1. SEPT1 Antibody (N-term) (ABIN1539454 and ABIN2848541) western blot analysis in HL-60 cell line lysates (35 µg/lane). This demonstrates the SEPT1 antibody detected the SEPT1 protein (arrow).