

Datasheet for ABIN1539457
anti-LRRC14B antibody (N-Term)



[Go to Product page](#)

1 Image

Overview

Quantity:	400 µL
Target:	LRRC14B
Binding Specificity:	AA 55-81, N-Term
Reactivity:	Human
Host:	Rabbit
Clonality:	Polyclonal
Application:	Western Blotting (WB)

Product Details

Immunogen:	This LRRC14B antibody is generated from rabbits immunized with a KLH conjugated synthetic peptide between 55-81 amino acids from the N-terminal region of human LRRC14B.
Clone:	RB38879
Isotype:	Ig Fraction
Purification:	This antibody is purified through a protein A column, followed by peptide affinity purification.

Target Details

Target:	LRRC14B
Alternative Name:	LRRC14B (LRRC14B Products)
Background:	The function of this protein remains unknown.
Molecular Weight:	56758

Target Details

Gene ID: 389257

NCBI Accession: [NP_001073947](#)

UniProt: [A6NHZ5](#)

Application Details

Application Notes: WB: 1:1000

Restrictions: For Research Use only

Handling

Format: Liquid

Buffer: Purified polyclonal antibody supplied in PBS with 0.09 % (W/V) sodium azide.

Preservative: Sodium azide

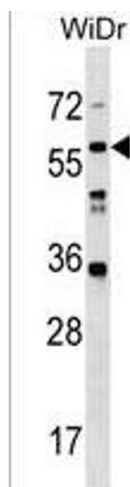
Precaution of Use: This product contains Sodium azide: a POISONOUS AND HAZARDOUS SUBSTANCE which should be handled by trained staff only.

Storage: 4 °C, -20 °C

Storage Comment: LRRC14B Antibody (N-term) can be refrigerated at 2-8 °C for up to 6 months. For long term storage, keep at -20 °C.

Expiry Date: 6 months

Images



Western Blotting

Image 1. LRRC14B Antibody (N-term) (ABIN1539457 and ABIN2850224) western blot analysis in WiDr cell line lysates (35 µg/lane). This demonstrates the LRRC14B antibody detected the LRRC14B protein (arrow).