

Datasheet for ABIN1539466
anti-RAVER1 antibody (N-Term)[Go to Product page](#)

1 Image

Overview

Quantity:	400 µL
Target:	RAVER1
Binding Specificity:	AA 56-83, N-Term
Reactivity:	Human
Host:	Rabbit
Clonality:	Polyclonal
Application:	Western Blotting (WB)

Product Details

Immunogen:	This RAVER1 antibody is generated from rabbits immunized with a KLH conjugated synthetic peptide between 56-83 amino acids from the N-terminal region of human RAVER1.
Clone:	RB36514
Isotype:	Ig Fraction
Predicted Reactivity:	M
Purification:	This antibody is purified through a protein A column, followed by peptide affinity purification.

Target Details

Target:	RAVER1
Alternative Name:	RAVER1 (RAVER1 Products)
Background:	RAVER1 cooperates with PTBP1 to modulate regulated alternative splicing events. Promotes

Target Details

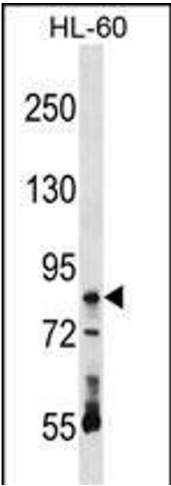
	exon skipping. Cooperates with PTBP1 to modulate switching between mutually exclusive exons during maturation of the TPM1 pre-mRNA (By similarity).
Molecular Weight:	63877
Gene ID:	125950
NCBI Accession:	NP_597709
UniProt:	Q8IY67

Application Details

Application Notes:	WB: 1:1000
Restrictions:	For Research Use only

Handling

Format:	Liquid
Buffer:	Purified polyclonal antibody supplied in PBS with 0.09 % (W/V) sodium azide.
Preservative:	Sodium azide
Precaution of Use:	This product contains Sodium azide: a POISONOUS AND HAZARDOUS SUBSTANCE which should be handled by trained staff only.
Storage:	4 °C,-20 °C
Storage Comment:	RAVER1 Antibody (N-term) can be refrigerated at 2-8 °C for up to 6 months. For long term storage, keep at -20 °C.
Expiry Date:	6 months



Western Blotting

Image 1. RAVR1 Antibody (N-term) (ABIN1539466 and ABIN2848505) western blot analysis in HL-60 cell line lysates (35 µg/lane). This demonstrates the RAVR1 antibody detected the RAVR1 protein (arrow).