

Datasheet for ABIN1539473
anti-FBXL8 antibody (N-Term)[Go to Product page](#)

1 Image

Overview

Quantity:	400 µL
Target:	FBXL8
Binding Specificity:	AA 57-83, N-Term
Reactivity:	Human
Host:	Rabbit
Clonality:	Polyclonal
Application:	Western Blotting (WB)

Product Details

Immunogen:	This FBXL8 antibody is generated from rabbits immunized with a KLH conjugated synthetic peptide between 57-83 amino acids from the N-terminal region of human FBXL8.
Clone:	RB37864
Isotype:	Ig Fraction
Purification:	This antibody is purified through a protein A column, followed by peptide affinity purification.

Target Details

Target:	FBXL8
Alternative Name:	FBXL8 (FBXL8 Products)
Background:	This gene encodes a member of the F-box protein family which is characterized by an approximately 40 amino acid motif, the F-box. The F-box proteins constitute one of the four subunits of the ubiquitin protein ligase complex called SCFs (SKP1-cullin-F-box), which function

Target Details

in phosphorylation-dependent ubiquitination. The F-box proteins are divided into 3 classes: Fbws containing WD-40 domains, Fbls containing leucine-rich repeats, and Fbxs containing either different protein-protein interaction modules or no recognizable motifs. The protein encoded by this gene belongs to the Fbls class. It shares 78 % sequence identity with the mouse protein.

Molecular Weight: 40516

Gene ID: 55336

NCBI Accession: [NP_060848](#)

UniProt: [Q96CD0](#)

Application Details

Application Notes: WB: 1:1000

Restrictions: For Research Use only

Handling

Format: Liquid

Buffer: Purified polyclonal antibody supplied in PBS with 0.09 % (W/V) sodium azide.

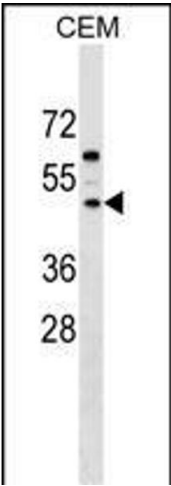
Preservative: Sodium azide

Precaution of Use: This product contains Sodium azide: a POISONOUS AND HAZARDOUS SUBSTANCE which should be handled by trained staff only.

Storage: 4 °C,-20 °C

Storage Comment: FBXL8 Antibody (N-term) can be refrigerated at 2-8 °C for up to 6 months. For long term storage, keep at -20 °C.

Expiry Date: 6 months



Western Blotting

Image 1. FBXL8 Antibody (N-term) (ABIN1539473 and ABIN2849440) western blot analysis in CEM cell line lysates (35 µg/lane). This demonstrates the FBXL8 antibody detected the FBXL8 protein (arrow).