

Datasheet for ABIN1539482
anti-KATNA1 antibody (N-Term)[Go to Product page](#)

1 Image

Overview

Quantity:	400 µL
Target:	KATNA1
Binding Specificity:	AA 59-85, N-Term
Reactivity:	Human
Host:	Rabbit
Clonality:	Polyclonal
Application:	Western Blotting (WB)

Product Details

Immunogen:	This KATNA1 antibody is generated from rabbits immunized with a KLH conjugated synthetic peptide between 59-85 amino acids from the N-terminal region of human KATNA1.
Clone:	RB38862
Isotype:	Ig Fraction
Predicted Reactivity:	Pr
Purification:	This antibody is purified through a protein A column, followed by peptide affinity purification.

Target Details

Target:	KATNA1
Alternative Name:	KATNA1 (KATNA1 Products)
Background:	Microtubules, polymers of alpha and beta tubulin subunits, form the mitotic spindle of a

Target Details

dividing cell and help to organize membranous organelles during interphase. Katanin is a heterodimer that consists of a 60 kDa ATPase (p60 subunit A 1) and an 80 kDa accessory protein (p80 subunit B 1). The p60 subunit acts to sever and disassemble microtubules, while the p80 subunit targets the enzyme to the centrosome. This gene encodes the p80 subunit. This protein is a member of the AAA family of ATPases. [provided by RefSeq].

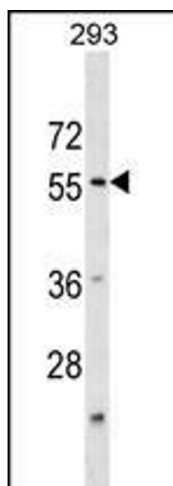
Molecular Weight:	55965
Gene ID:	11104
NCBI Accession:	NP_001191005 , NP_008975
UniProt:	O75449
Pathways:	Microtubule Dynamics

Application Details

Application Notes:	WB: 1:1000
Restrictions:	For Research Use only

Handling

Format:	Liquid
Buffer:	Purified polyclonal antibody supplied in PBS with 0.09 % (W/V) sodium azide.
Preservative:	Sodium azide
Precaution of Use:	This product contains Sodium azide: a POISONOUS AND HAZARDOUS SUBSTANCE which should be handled by trained staff only.
Storage:	4 °C, -20 °C
Storage Comment:	KATNA1 Antibody (N-term) can be refrigerated at 2-8 °C for up to 6 months. For long term storage, keep at -20 °C.
Expiry Date:	6 months



Western Blotting

Image 1. KATNA1 Antibody (N-term) (ABIN1539482 and ABIN2850221) western blot analysis in 293 cell line lysates (35 µg/lane). This demonstrates the KATNA1 antibody detected the KATNA1 protein (arrow).