

Datasheet for ABIN1539487  
**anti-DUSP6 antibody (N-Term)**

## 3 Images

[Go to Product page](#)

## Overview

Quantity:	400 µL
Target:	DUSP6
Binding Specificity:	AA 59-88, N-Term
Reactivity:	Human, Mouse
Host:	Rabbit
Clonality:	Polyclonal
Application:	Western Blotting (WB)

## Product Details

Immunogen:	This DUSP6 antibody is generated from rabbits immunized with a KLH conjugated synthetic peptide between 59-88 amino acids from the N-terminal region of human DUSP6.
Clone:	RB36744
Isotype:	Ig Fraction
Predicted Reactivity:	B
Purification:	This antibody is purified through a protein A column, followed by peptide affinity purification.

## Target Details

Target:	DUSP6
Alternative Name:	DUSP6 ( <a href="#">DUSP6 Products</a> )
Background:	The protein encoded by this gene is a member of the dual specificity protein phosphatase

## Target Details

subfamily. These phosphatases inactivate their target kinases by dephosphorylating both the phosphoserine/threonine and phosphotyrosine residues. They negatively regulate members of the mitogen-activated protein (MAP) kinase superfamily (MAPK/ERK, SAPK/JNK, p38), which are associated with cellular proliferation and differentiation. Different members of the family of dual specificity phosphatases show distinct substrate specificities for various MAP kinases, different tissue distribution and subcellular localization, and different modes of inducibility of their expression by extracellular stimuli. This gene product inactivates ERK2, is expressed in a variety of tissues with the highest levels in heart and pancreas, and unlike most other members of this family, is localized in the cytoplasm. Two transcript variants encoding different isoforms have been found for this gene.

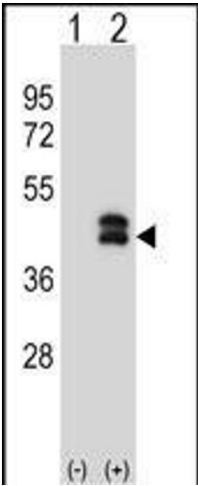
Molecular Weight:	42320
Gene ID:	1848
NCBI Accession:	<a href="#">NP_001937</a> , <a href="#">NP_073143</a>
UniProt:	<a href="#">Q16828</a>
Pathways:	<a href="#">Neurotrophin Signaling Pathway</a> , <a href="#">Activation of Innate immune Response</a> , <a href="#">Toll-Like Receptors Cascades</a>

## Application Details

Application Notes:	WB: 1:1000. WB: 1:1000. WB: 1:1000
Restrictions:	For Research Use only

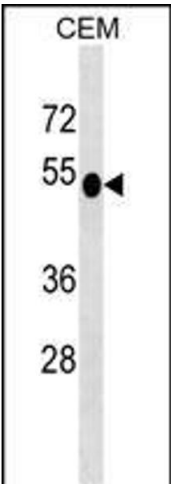
## Handling

Format:	Liquid
Buffer:	Purified polyclonal antibody supplied in PBS with 0.09 % (W/V) sodium azide.
Preservative:	Sodium azide
Precaution of Use:	This product contains Sodium azide: a POISONOUS AND HAZARDOUS SUBSTANCE which should be handled by trained staff only.
Storage:	4 °C, -20 °C
Storage Comment:	DUSP6 Antibody (N-term) can be refrigerated at 2-8 °C for up to 6 months. For long term storage, keep at -20 °C.
Expiry Date:	6 months



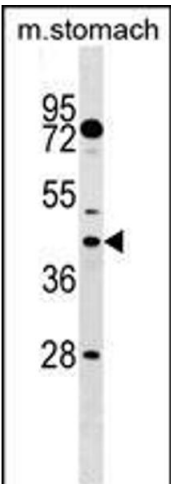
Western Blotting

**Image 1.** Western blot analysis of DUSP6 (arrow) using rabbit polyclonal DUSP6 Antibody (N-term) (ABIN1539487 and ABIN2849153). 293 cell lysates (2 µg/lane) either nontransfected (Lane 1) or transiently transfected (Lane 2) with the DUSP6 gene.



Western Blotting

**Image 2.** DUSP6 Antibody (N-term) (ABIN1539487 and ABIN2849153) western blot analysis in CEM cell line lysates (35 µg/lane). This demonstrates the DUSP6 antibody detected the DUSP6 protein (arrow).



Western Blotting

**Image 3.** DUSP6 Antibody (N-term) (ABIN1539487 and ABIN2849153) western blot analysis in mouse stomach tissue lysates (35 µg/lane). This demonstrates the DUSP6 antibody detected the DUSP6 protein (arrow).