

Datasheet for ABIN1539494
anti-ZNF280B antibody (N-Term)[Go to Product page](#)

1 Image

Overview

Quantity:	400 µL
Target:	ZNF280B
Binding Specificity:	AA 60-89, N-Term
Reactivity:	Human
Host:	Rabbit
Clonality:	Polyclonal
Application:	Western Blotting (WB)

Product Details

Immunogen:	This ZNF280B antibody is generated from rabbits immunized with a KLH conjugated synthetic peptide between 60-89 amino acids from the N-terminal region of human ZNF280B.
Clone:	RB38056
Isotype:	Ig Fraction
Purification:	This antibody is purified through a protein A column, followed by peptide affinity purification.

Target Details

Target:	ZNF280B
Alternative Name:	ZNF280B (ZNF280B Products)
Background:	This gene was identified by homology to other species. Its encoded protein is approximately 78-88 % identical to a predicted sheep protein of unknown function. The protein is also approximately 25 % identical to the Drosophila protein suppressor of hairy wing, which is a

Target Details

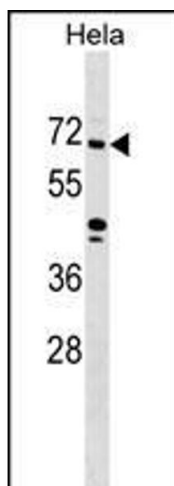
	leucine zipper protein that represses the function of transcriptional enhancers of the gypsy retrotransposon.
Molecular Weight:	61584
Gene ID:	140883
NCBI Accession:	NP_542942
UniProt:	Q86YH2

Application Details

Application Notes:	WB: 1:1000
Restrictions:	For Research Use only

Handling

Format:	Liquid
Buffer:	Purified polyclonal antibody supplied in PBS with 0.09 % (W/V) sodium azide.
Preservative:	Sodium azide
Precaution of Use:	This product contains Sodium azide: a POISONOUS AND HAZARDOUS SUBSTANCE which should be handled by trained staff only.
Storage:	4 °C,-20 °C
Storage Comment:	ZNF280B Antibody (N-term) can be refrigerated at 2-8 °C for up to 6 months. For long term storage, keep at -20 °C.
Expiry Date:	6 months



Western Blotting

Image 1. ZNF280B Antibody (N-term) (ABIN1539494 and ABIN2849389) western blot analysis in HeLa cell line lysates (35 µg/lane). This demonstrates the ZNF280B antibody detected the ZNF280B protein (arrow).