



[Go to Product page](#)

Datasheet for ABIN1539495  
**anti-Keratin 31 antibody (N-Term)**

1 Image

### Overview

Quantity:	400 µL
Target:	Keratin 31 (KRT31)
Binding Specificity:	AA 60-89, N-Term
Reactivity:	Human
Host:	Rabbit
Clonality:	Polyclonal
Application:	Western Blotting (WB)

### Product Details

Immunogen:	This KRT31 antibody is generated from rabbits immunized with a KLH conjugated synthetic peptide between 60-89 amino acids from the N-terminal region of human KRT31.
Clone:	RB39593
Isotype:	Ig Fraction
Purification:	This antibody is purified through a protein A column, followed by peptide affinity purification.

### Target Details

Target:	Keratin 31 (KRT31)
Alternative Name:	KRT31 ( <a href="#">KRT31 Products</a> )
Background:	The protein encoded by this gene is a member of the keratin gene family. As a type I hair keratin, it is an acidic protein which heterodimerizes with type II keratins to form hair and nails. The type I hair keratins are clustered in a region of chromosome 17q12-q21 and have the same

## Target Details

---

direction of transcription.

Molecular Weight: 47237

Gene ID: 3881

NCBI Accession: [NP\\_002268](#)

UniProt: [Q15323](#)

## Application Details

---

Application Notes: WB: 1:1000

Restrictions: For Research Use only

## Handling

---

Format: Liquid

Buffer: Purified polyclonal antibody supplied in PBS with 0.09 % (W/V) sodium azide.

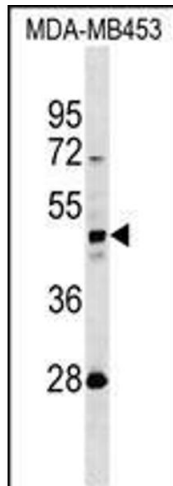
Preservative: Sodium azide

Precaution of Use: This product contains Sodium azide: a POISONOUS AND HAZARDOUS SUBSTANCE which should be handled by trained staff only.

Storage: 4 °C,-20 °C

Storage Comment: KRT31 Antibody (N-term) can be refrigerated at 2-8 °C for up to 6 months. For long term storage, keep at -20 °C.

Expiry Date: 6 months



### Western Blotting

**Image 1.** KRT31 Antibody (N-term) (ABIN1539495 and ABIN2850265) western blot analysis in MDA-M cell line lysates (35 µg/lane). This demonstrates the KRT31 antibody detected the KRT31 protein (arrow).