

Datasheet for ABIN1539497
anti-SGPP2 antibody (N-Term)[Go to Product page](#)

1 Image

Overview

Quantity:	400 µL
Target:	SGPP2
Binding Specificity:	AA 7-33, N-Term
Reactivity:	Human
Host:	Rabbit
Clonality:	Polyclonal
Application:	Western Blotting (WB)

Product Details

Immunogen:	This SGPP2 antibody is generated from rabbits immunized with a KLH conjugated synthetic peptide between 7-33 amino acids from the N-terminal region of human SGPP2.
Clone:	RB37992
Isotype:	Ig Fraction
Purification:	This antibody is purified through a protein A column, followed by peptide affinity purification.

Target Details

Target:	SGPP2
Alternative Name:	SGPP2 (SGPP2 Products)
Background:	Sphingosine-1-phosphate (S1P) is a bioactive sphingolipid metabolite that regulates diverse biologic processes. SGPP2 catalyzes the degradation of S1P (Ogawa et al., 2003 [PubMed 12411432]).

Target Details

Molecular Weight:	44741
Gene ID:	130367
NCBI Accession:	NP_689599
UniProt:	Q8IWX5

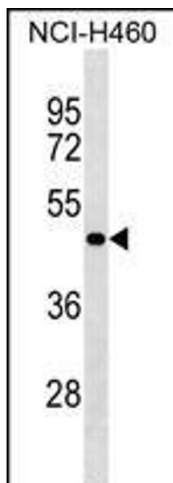
Application Details

Application Notes:	WB: 1:1000
Restrictions:	For Research Use only

Handling

Format:	Liquid
Buffer:	Purified polyclonal antibody supplied in PBS with 0.09 % (W/V) sodium azide.
Preservative:	Sodium azide
Precaution of Use:	This product contains Sodium azide: a POISONOUS AND HAZARDOUS SUBSTANCE which should be handled by trained staff only.
Storage:	4 °C, -20 °C
Storage Comment:	SGPP2 Antibody (N-term) can be refrigerated at 2-8 °C for up to 6 months. For long term storage, keep at -20 °C.
Expiry Date:	6 months

Images



Western Blotting

Image 1. SG Antibody (N-term) (ABIN1539497 and ABIN2849755) western blot analysis in NCI- cell line lysates (35 µg/lane). This demonstrates the SG antibody detected the SG protein (arrow).